

NOTES:

MECHANICAL

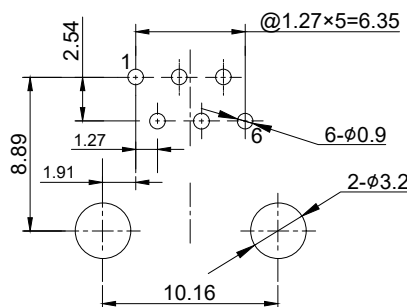
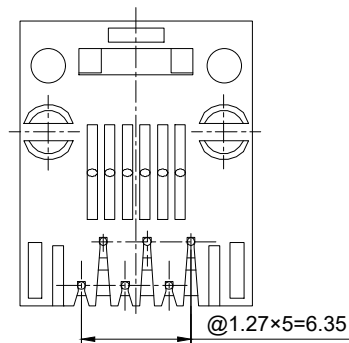
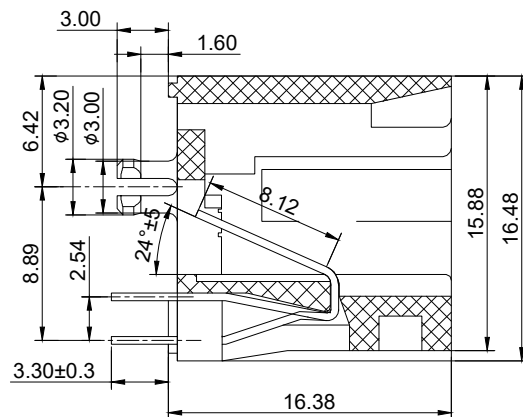
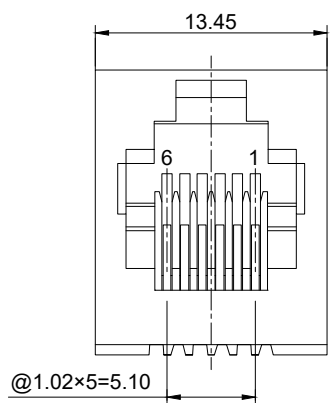
HOUSING & INSERT : PBT UL94V-0
 CONTACT : PHOSPHOR BRONZE Ø0.46mm
 CONTACT PLATING : GOLD PLATING OVER NICKEL
 MATING/UNMATING FORCE : 30N Max.
 RETENTION STRENGTH : 50N FOR 60s±5s
 DURABILITY : 750 CYCLES MIN.

ELECTRICAL

VOLTAGE RATING : 125V AC RMS.
 CURRENT RATING : 1.5 AMPS @25°C
 CONTACT RESISTANCE : 20 mΩ Max.
 INSULATION RESISTANCE : 1000 MΩ Min. @500V DC
 WITHSTAND VOLTAGE : CONTACT TO CONTACT
 1000V DC OR AC PEAK,
 CONTACT TO SCREEN AND
 TEST PANEL 1500V DC OR
 AC PEAK @0.5mA 50Hz OR
 60Hz ONE MINUTE

ENVIRONMENTAL

STORAGE TEMPERATURE : -40°C~+85°C
 OPERATION TEMPERATURE : -40°C~+85°C



RECOMMENDED PCB LAYOUT

		UNIT	mm
		REVISION	16
PRODUCT		RJ11 1x1 TOP ENTRY JACK	
DWG NO.		PART NO.	
EZC0711-16N11-01			
PROJECTION	SCALE	SHEET	1 OF 1
		TOLERANCES	
		00~15 ± 0.15	
		15~30 ± 0.20	
		30~ ± 0.25	
		ANGLES ± 1°	