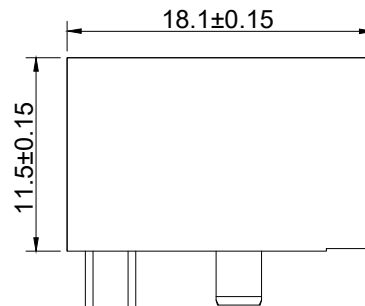
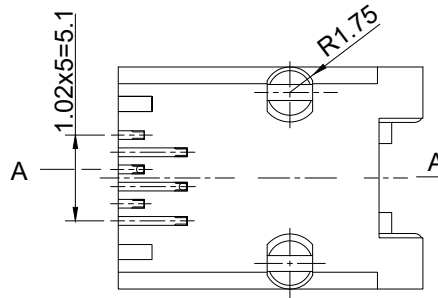




RECOMMENDED PCB LAYOUT



NOTES:
MECHANICAL
 HOUSING & INSERT : THERMOPLASTIC GLASS
 : FIBER FILLED UL94V-0 BLACK
 CONTACT : PHOSPHOR BRONZE
 PLATING : GOLD PLATING AT CONTACT
 AREA, NICKEL 30U MIN. OVER ALL
 DURABILITY : 750 CYCLES MIN.
 MATING/UNMATING FORCE : 30N/3.06KG MAX.
 RETENTION STRENGTH : 30N MIN.FOR 60S±5S

ELECTRICAL
 VOLTAGE RATING : 125 VAC RMS
 CURRENT RATING : 1.5 AMP
 CONTACT RESISTANCE : 20 mΩ MAX.
 INSULATION RESISTANCE : 1000 MΩ MIN. AT 500V DC
 DIELECTRIC STRENGTH : 1000 V AC OR 1500V DC
 : RMS AT 0.5mA 50Hz / 60Hz
 : FOR ONE MINUTE

ENVIRONMENTAL
 STORAGE : -40°C ~ +85°C
 OPERATION : -40°C ~ +85°C

 E.S. GLOBAL TOP		UNIT	mm
		REVISION	04
PRODUCT		RJ11 1X1 SIDE ENTRY JACK	
DWG NO.	EZC0811-16N11-05	PART NO.	
PROJECTION		SCALE	SHEET
		1 OF 1	
		TOLERANCES	
		00~15 ± 0.15	
		15~30 ± 0.20	
		30~ ± 0.25	
		ANGLES ± 1°	