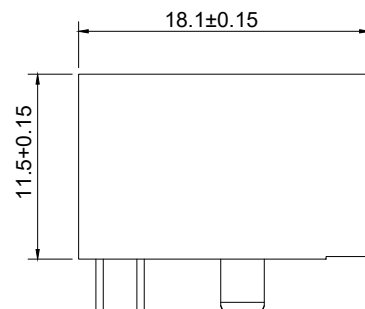
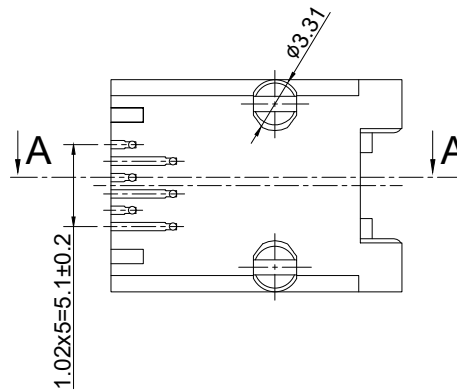



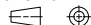
RECOMMENDED PCB LAYOUT



NOTES:
MECHANICAL HOUSING & INSERT : THERMOPLASTIC GLASS
 : FIBER FILLED UL94V-0 BLACK
 : PHOSPHOR BRONZE
CONTACT PLATING : GOLD PLATING AT CONTACT
 : AREA NICKEL 30U MIN. OVER ALL
DURABILITY : 750 CYCLES MIN.
MATING/UNMATING FORCE : 30N / 3.06 KG MAX.
RETENTION STRENGTH : 30N MIN. FOR 60S±5S

ELECTRICAL
VOLTAGE RATING : 125 VAC RMS
CURRENT RATING : 1.5 AMP
CONTACT RESISTANCE : 20 mΩ MAX.
INSULATION RESISTANCE : 1000 MΩ MIN. AT 500V DC
DIELECTRIC STRENGTH : 1000V AC OR 1500V DC
 RMS AT 0.5mA 50 Hz / 60Hz
 FOR ONE MINUTE

ENVIRONMENTAL
STORAGE : -40°C ~ +85°C
OPERATION : -40°C ~ +85°C

 E.S. GLOBAL TOP		UNIT	mm
		REVISION	04
PRODUCT		RJ11 1X1 SIDE ENTRY JACK	
DWG NO.		PART NO.	
EZC0811-16N11-06			
PROJECTION	SCALE	SHEET	1 OF 1
			
		TOLERANCES	
		00~15 ±0.15	
		15~30 ±0.20	
		30~ ±0.25	
		50~ ±0.30	
		ANGLES ± 1°	