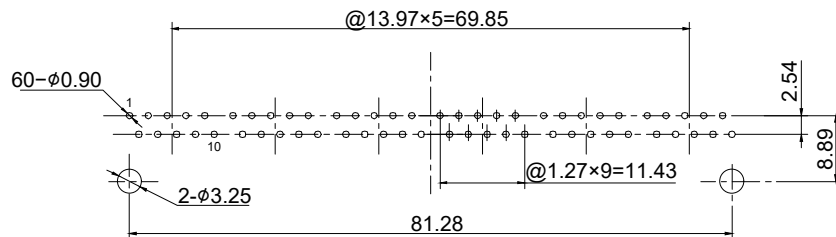
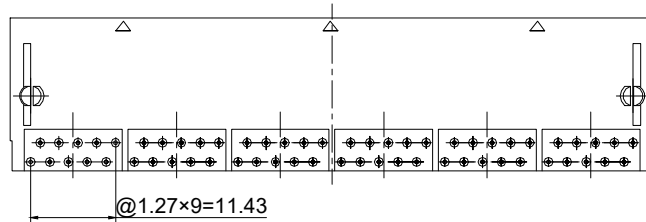




NOTES:
MECHANICAL
 HOUSING&INSERT : PBT UL94V-0 BLACK
 CONTACT : PHOSPHOR BRONZE
 PLATING : GOLD PLATING OVER NICKEL
 DURABILITY : 750 CYCLES MIN.
 MATING/UNMATING FORCE : 30N MAX.
 RETENTION STRENGTH : 50N FOR 60S±5S

ELECTRICAL
 VOLTAGE RATING : 125VAC RMS
 CURRENT RATING : 1.5 AMPS
 CONTACT RESISTANCE : 20 mΩ MAX.
 INSULATION RESISTANCE : 1000 MΩ MIN. @500V DC
 DIELECTRIC STRENGTH : 1000V AC OR 1500V DC RMS @ 0.5mA 50 Hz / 60 Hz ONE MINUTE

ENVIRONMENTAL
 STORAGE : -40°C ~ +85°C
 OPERATION : -40°C ~ +85°C



RECOMMENDED PCB LAYOUT

 E.S. GLOBAL TOP		UNIT	mm
		REVISION	03
PRODUCT		RJ45 1X6 SIDE ENTRY JACK	
DWG NO.		PART NO.	
EZC1445-68N11-01			
PROJECTION	SCALE	SHEET	1 OF 1
			
		ANGLES ± 1°	