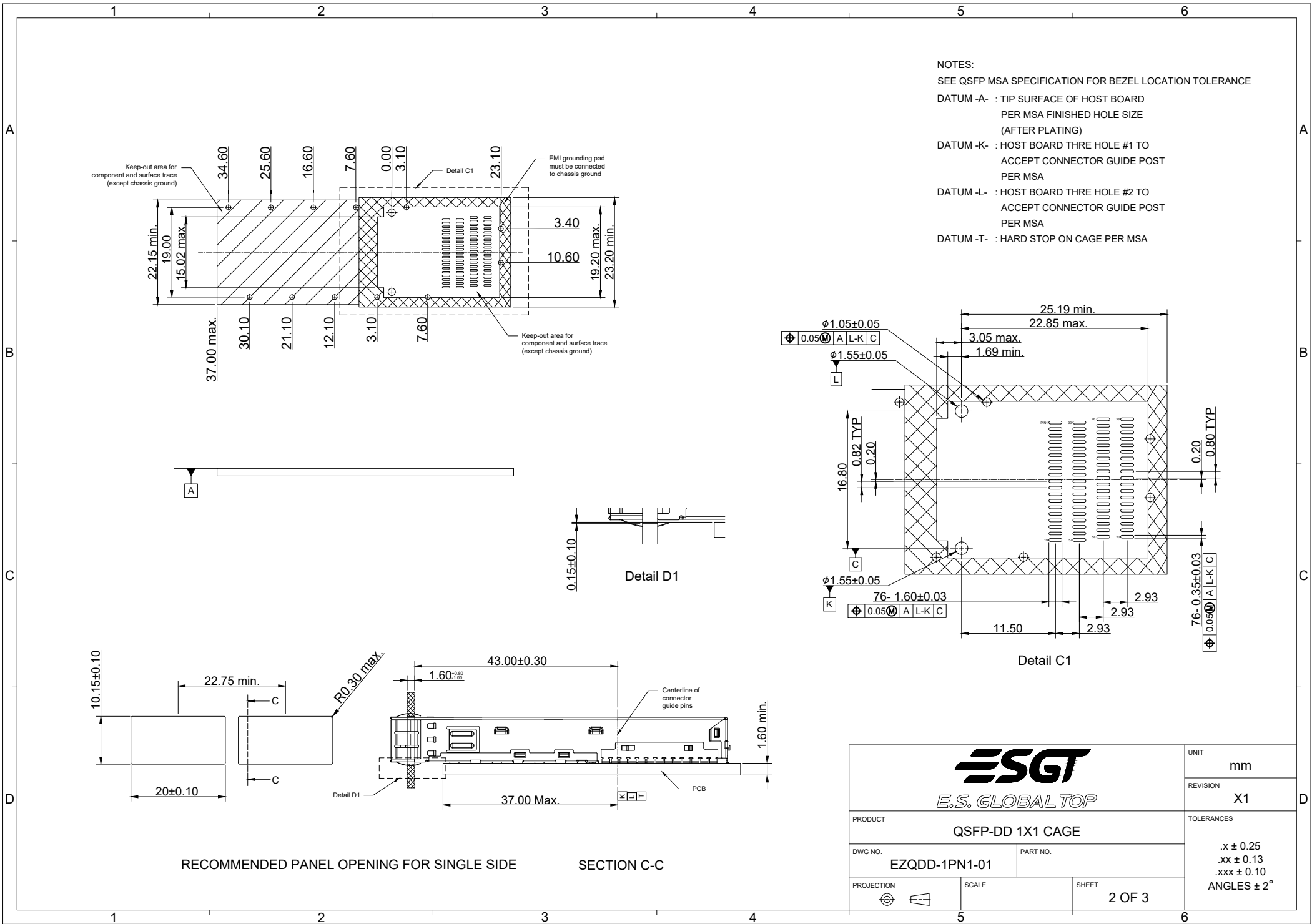


Note
 Cage: stainless steel
 EMI spring: beryllium copper

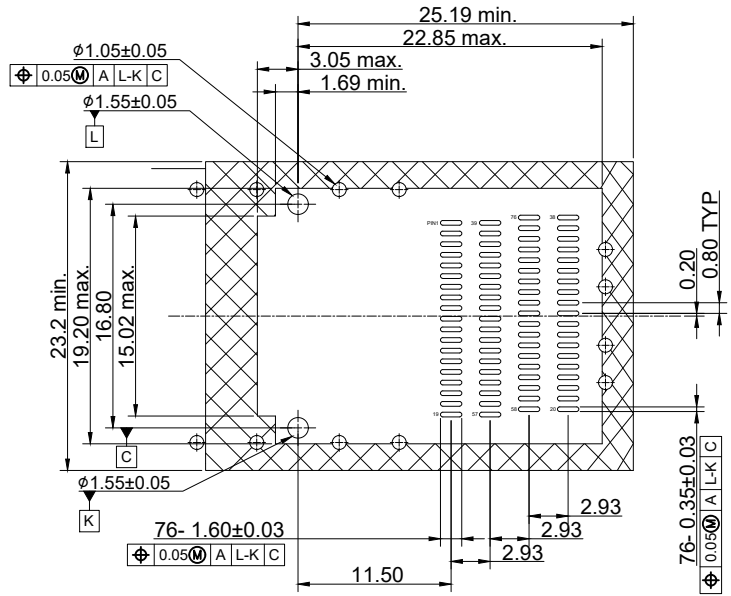
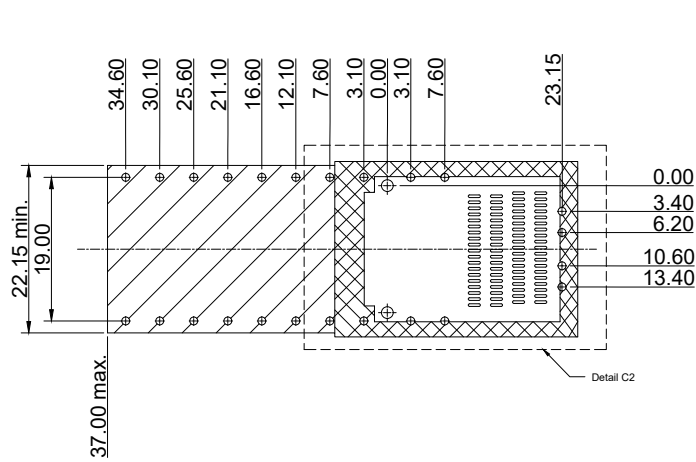
		UNIT	mm
		REVISION	X1
PRODUCT		QSFP-DD 1X1 CAGE	
DWG NO.		PART NO.	
EZQDD-1PN1-01			
PROJECTION	SCALE	SHEET	1 OF 3
		TOLERANCES	
		.x ± 0.25	
		.xx ± 0.13	
		.xxx ± 0.10	
		ANGLES ± 2°	



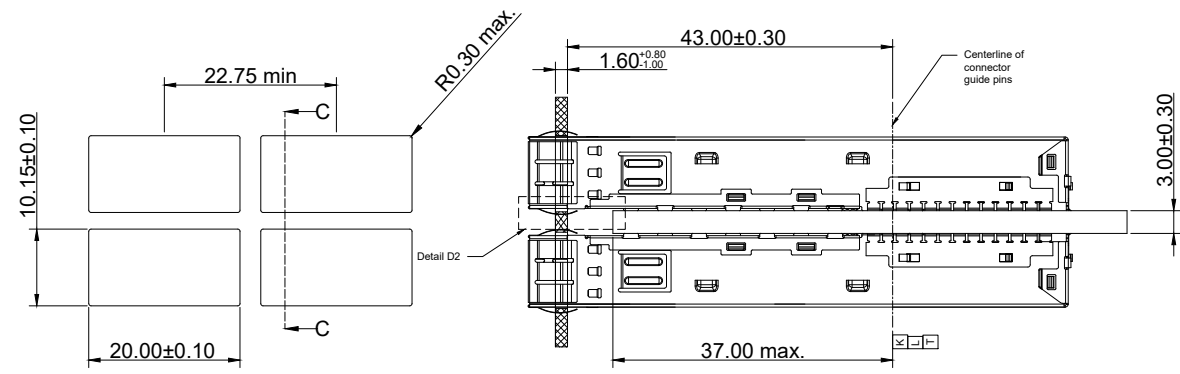
NOTES:
 SEE QSFP MSA SPECIFICATION FOR BEZEL LOCATION TOLERANCE
 DATUM -A- : TIP SURFACE OF HOST BOARD
 PER MSA FINISHED HOLE SIZE
 (AFTER PLATING)
 DATUM -K- : HOST BOARD THRE HOLE #1 TO
 ACCEPT CONNECTOR GUIDE POST
 PER MSA
 DATUM -L- : HOST BOARD THRE HOLE #2 TO
 ACCEPT CONNECTOR GUIDE POST
 PER MSA
 DATUM -T- : HARD STOP ON CAGE PER MSA

RECOMMENDED PANEL OPENING FOR SINGLE SIDE SECTION C-C

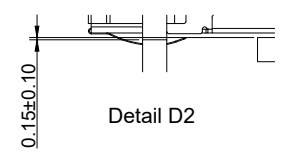
		UNIT	mm
		REVISION	X1
PRODUCT		TOLERANCES	
QSFP-DD 1X1 CAGE		.x ± 0.25 .xx ± 0.13 .xxx ± 0.10 ANGLES ± 2°	
DWG NO.	PART NO.		
EZQDD-1PN1-01			
PROJECTION	SCALE	SHEET	
		2 OF 3	



Detail C2



RECOMMENDED PCB LAYOUT FOR BELLY TO BELLY APPLICATION SECTION C-C



Detail D2

		UNIT	mm
		REVISION	X1
PRODUCT		QSFP-DD 1X1 CAGE	
DWG NO.	EZQDD-1PN1-01	PART NO.	
PROJECTION		SCALE	SHEET
			3 OF 3
		TOLERANCES	.x ± 0.25 .xx ± 0.13 .xxx ± 0.10 ANGLES ± 2°