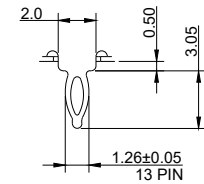


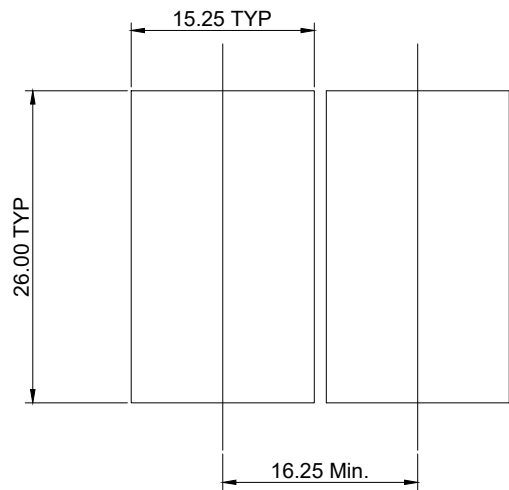
DETAIL A



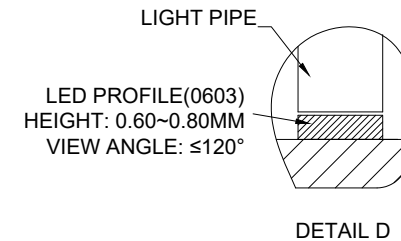
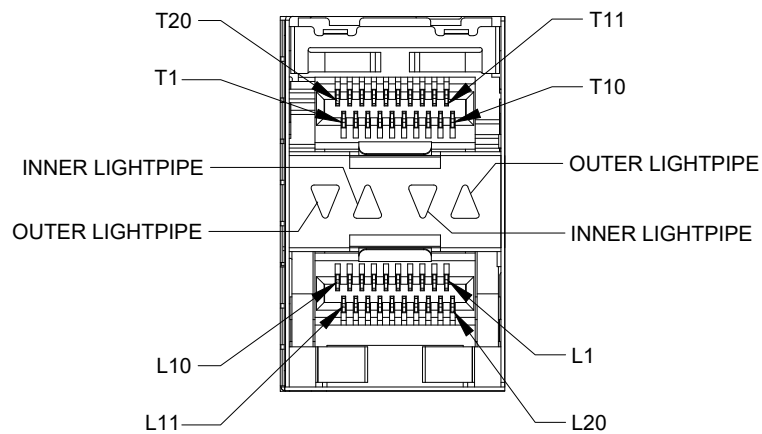
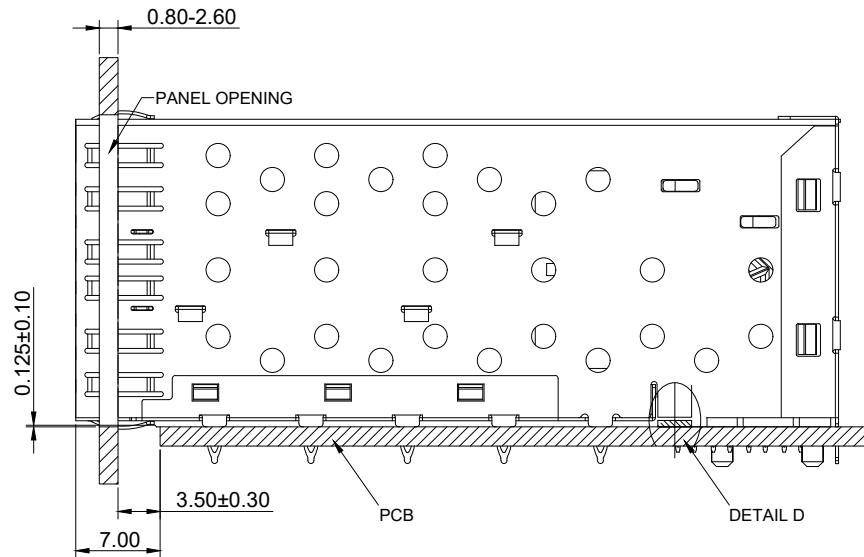
DETAIL B

- NOTES:
- HOUSING : LCP UL94V-0 BLACK
  - INSERT : THERMOPLASTIC UL94V-0 BLACK
  - CONTACT : PHOSPHOR BRONZE
  - CAGE : COPPER ALLOY
  - LIGHT PIPES : POLYCARBONATE UL94V-0 TRANSPARENT
  - LIGHT PIPE HOUSING : PBT UL94V-0 BLACK
  - CONTACT MATING AREA : GOLD PLATING OVER NICKEL 1.27µm Min.
  - CONNECTER PRESS-FIT PINS : 2.54µm Min. MATTE TIN
  - INSERTION FORCE : 40N Max.
  - EXTRACTION FORCE : 11.5N Max.
  - DURABILITY : 100 CYCLES MIN.
  - LOW LEVEL CONTACT RESISTANCE (LLCR) : ΔR 10 MΩ Max. FOR SHIELD AND SIGNAL CONTACTS
  - DIELECTRIC WITHSTANDING : 300V AC Max.
  - INSULATION RESISTANCE : 1x10<sup>9</sup> OHMS Min.
  - OPERATION TEMPERATURE : -40°C~+85°C
  - STORAGE TEMPERATURE : -55°C~+105°C
  - CURRENT RATING : 0.5 AMPS Max.
  - VOLTAGE RATING : 30 VOLTS DC OR AC RMS. Max.

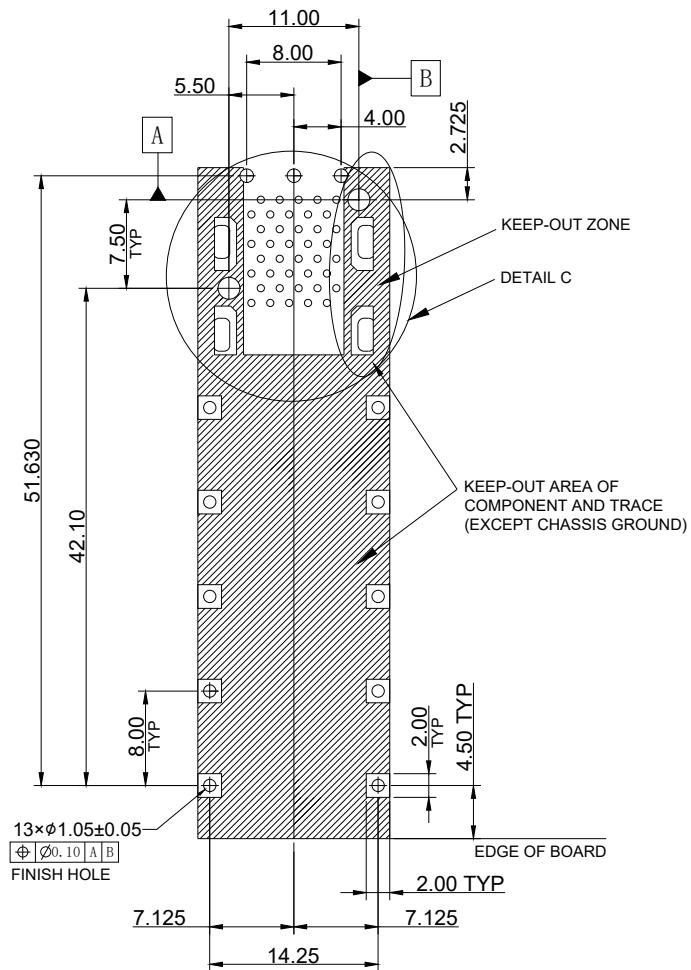
		UNIT	mm
		REVISION	E
PRODUCT		SFP 2X1 CAGE	
DWG NO.	EZS-21N21-01	PART NO.	
PROJECTION		SCALE	SHEET
		1 OF 3	
		TOLERANCES	
		.0 ± 0.25	
		.00 ± 0.13	
		.000 ± 0.10	
		ANGLES ± 2°	



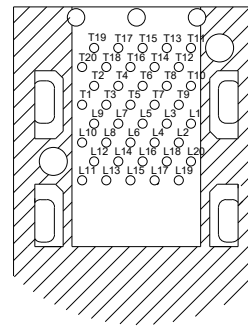
RECOMMENDED PANEL OPENING



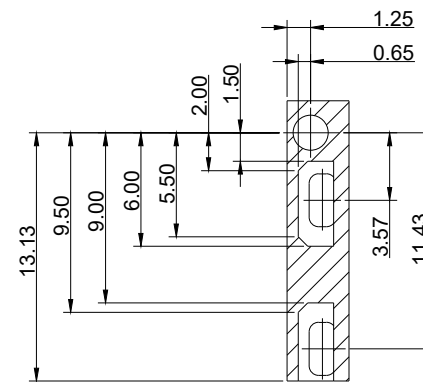
		UNIT	mm
		REVISION	E
PRODUCT		SFP 2X1 CAGE	
DWG NO.	EZS-21N21-01	PART NO.	
PROJECTION	SCALE	SHEET	2 OF 3
		TOLERANCES	
		.0 ± 0.25	
		.00 ± 0.13	
		.000 ± 0.10	
		ANGLES ± 2°	



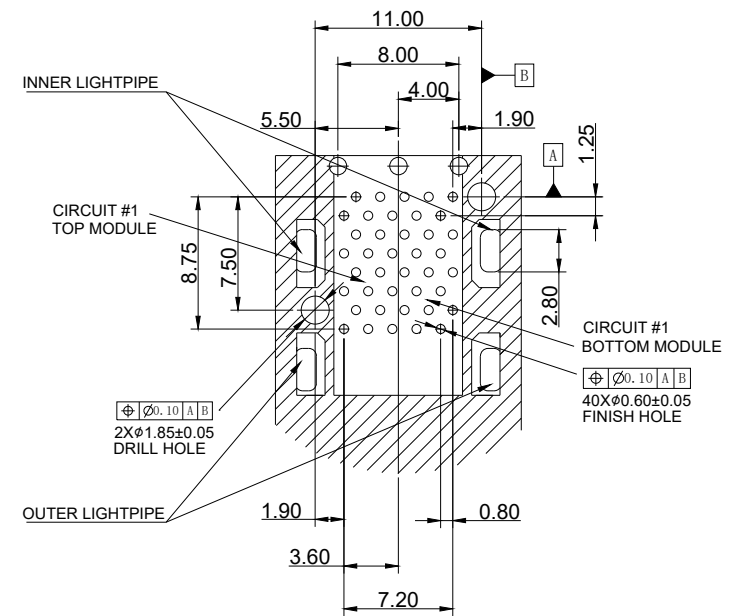
RECOMMENDED PCB LAYOUT



CONNECTOR PIN-OUT



KEEP-OUT ZONE



DETAIL C

		UNIT	mm
		REVISION	E
PRODUCT		SFP 2X1 CAGE	
DWG NO.		PART NO.	
EZS-21N21-01			
PROJECTION	SCALE	SHEET	3 OF 3
		TOLERANCES	
		.0 ± 0.25	
		.00 ± 0.13	
		.000 ± 0.10	
		ANGLES ± 2°	