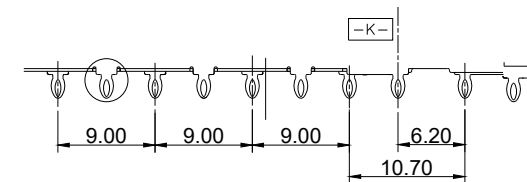
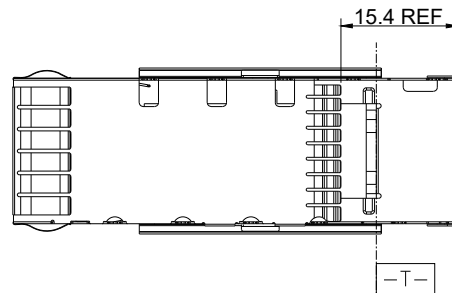
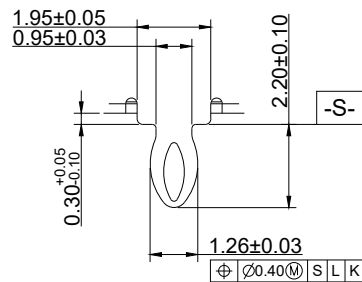
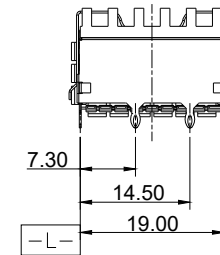
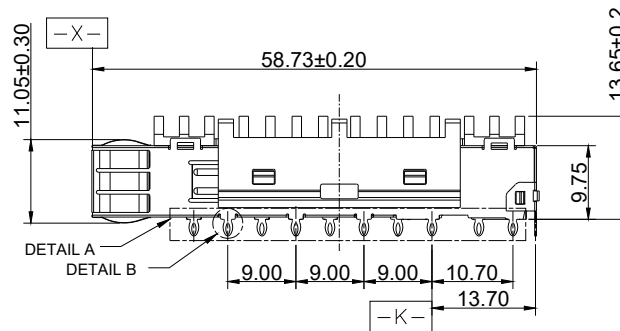
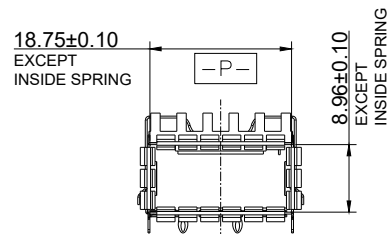


NOTES
MATERIAL

- CAGE : COPPER ALLOY 0.762µm Min.
NICKEL PLATING OVER ALL
- EMI SPRING : BERYLLIUM COPPER 0.762µm Min.
NICKEL PLATING OVER ALL
- HEAT SINK : ALUMINUM
- HEAT SINK CLIP : STEEL



DETAIL A

DETAIL B

		UNIT	mm
		REVISION	E
PRODUCT		TOLERANCES	
QSF+ 1X1 CAGE		.0 ± 0.25 .00 ± 0.13 .000 ± 0.10 ANGLES ± 2°	
DWG NO.	PART NO.		
EZQS-1PH1-01			
PROJECTION	SCALE	SHEET	
		1 OF 2	

