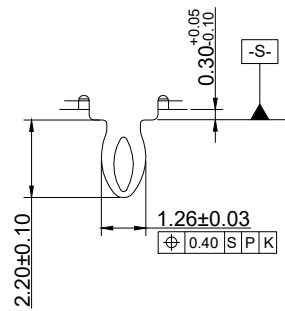
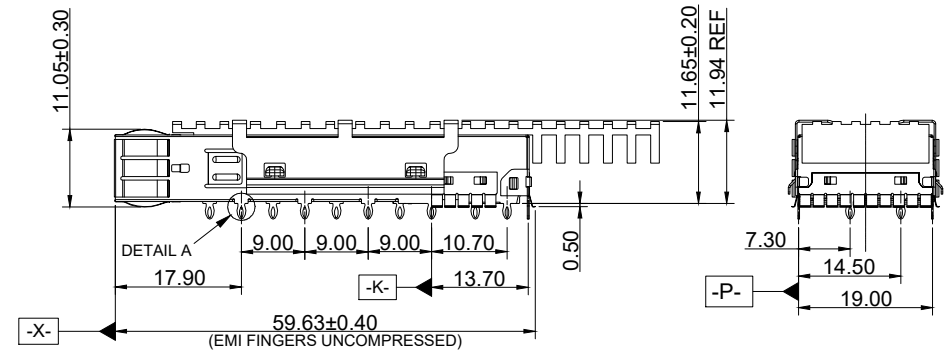
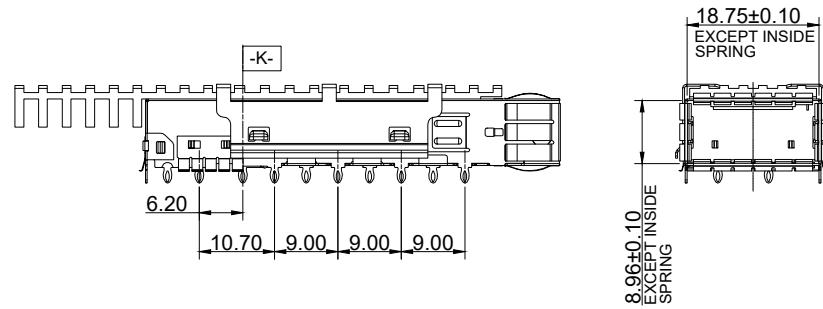
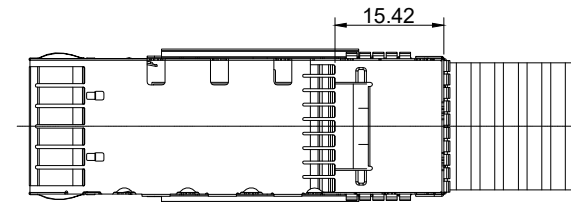


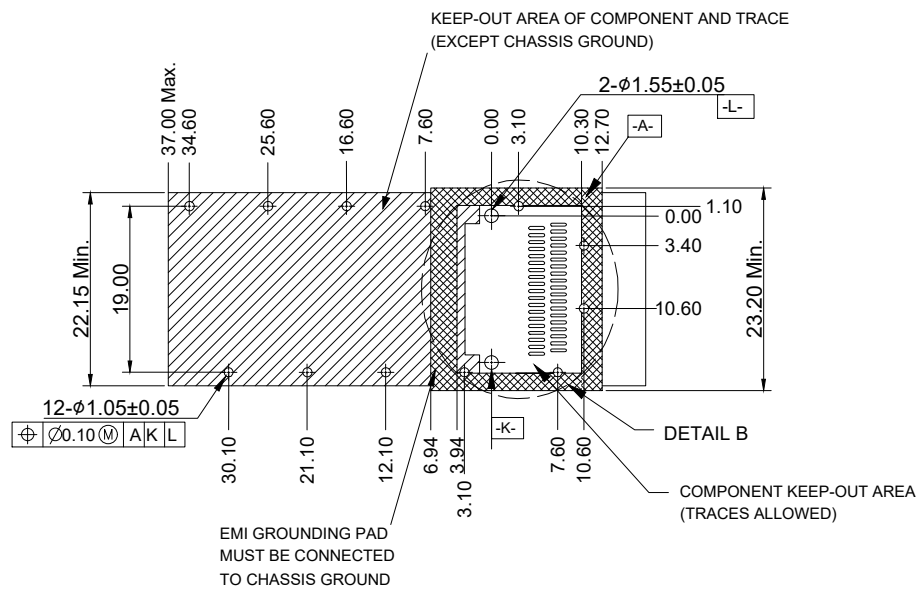
NOTES:
 CAGE : COPPER ALLOY 0.762µm Min.
 NICKEL PLATING OVER ALL
 EMI SPRING : BERYLLIUM COPPER 0.762µm Min.
 NICKEL PLATING OVER ALL
 HEAT SINK : ALUMINUM
 HEAT SINK CLIP : STEEL



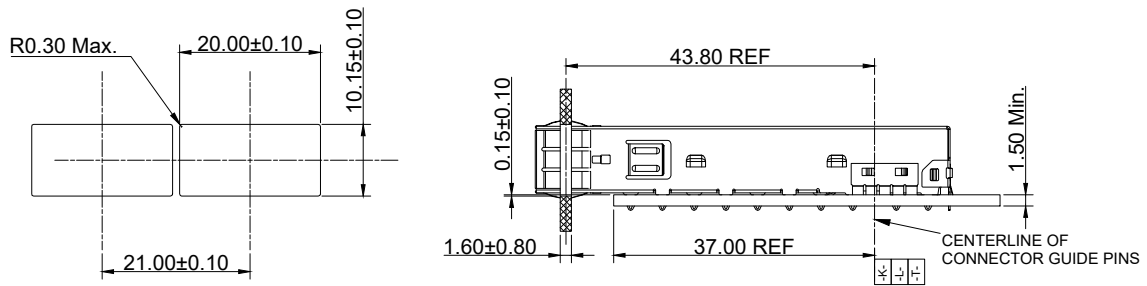
DETAIL A



			UNIT	mm
			REVISION	A
PRODUCT			TOLERANCES	
QSFP+ 1X1 CAGE			.0 ± 0.25	
DWG NO.		PART NO.	.00 ± 0.13	
EZQS-1PH1-02		.000 ± 0.10		
PROJECTION	SCALE	SHEET	ANGLES ± 5°	
		1 OF 2		

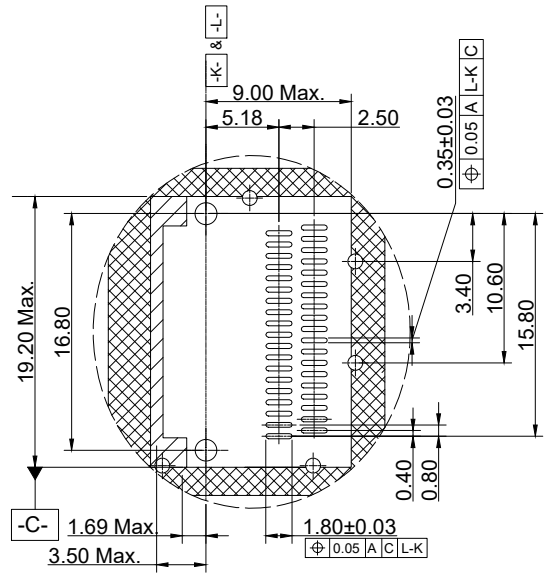


RECOMMENDED PCB LAYOUT



RECOMMENDED PANEL OPENING

NOTES:
 SEE QSFP MSA SPECIFICATION FOR BEZEL LOCATION TOLERANCE
 DATUM -A- : TIP SURFACE OF HOST BOARD
 PER MSA FINISHED HOLE SIZE (AFTER PLATING)
 DATUM -K- : HOST BOARD THRE HOLE #1 TO ACCEPT CONNECTOR GUIDE POST PER MSA
 DATUM -L- : HOST BOARD THRE HOLE #2 TO ACCEPT CONNECTOR GUIDE POST PER MSA
 DATUM -T- : HARD STOP ON CAGE PER MSA



DETAIL B

			UNIT	mm
			REVISION	A
PRODUCT			TOLERANCES	
QSFP+ 1X1 CAGE			.0 \pm 0.25 .00 \pm 0.13 .000 \pm 0.10 ANGLES \pm 5°	
DWG NO.		PART NO.		
EZQS-1PH1-02				
PROJECTION	SCALE	SHEET		
		2 OF 2		