

		UNIT	mm
		REVISION	D
PRODUCT		QSFP+ 1X1 CAGE	
TOLERANCES		$X \pm 0.25$ $XX \pm 0.20$ $XXX \pm 0.10$ ANGLES $\pm 5^\circ$	
DWG NO.	EZQS-1PN1-01	PART NO.	
PROJECTION	SCALE	SHEET	1 OF 4

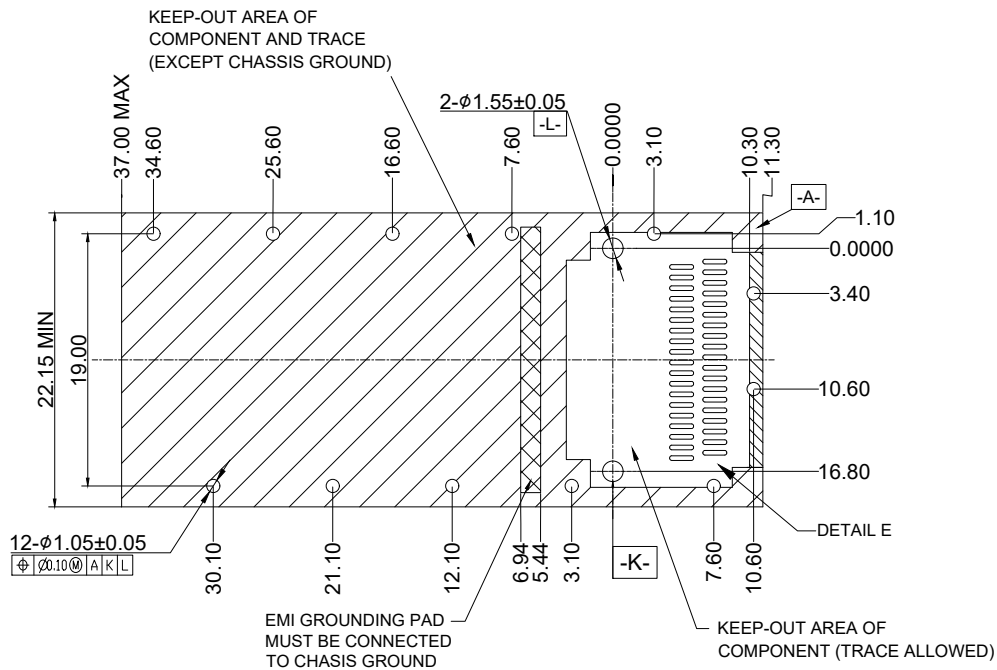
1 2 3 4 5 6

A

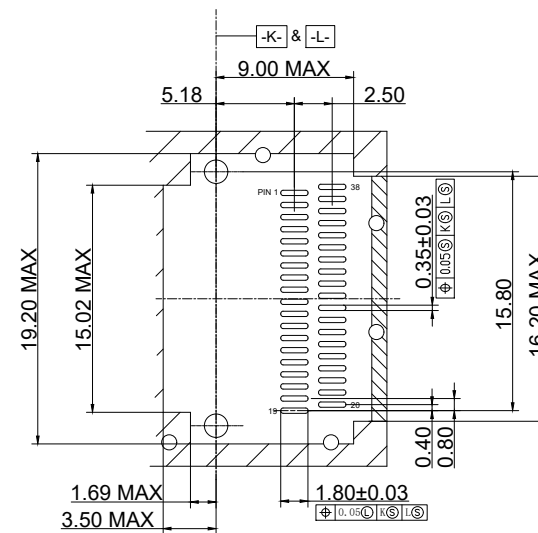
B

C

D



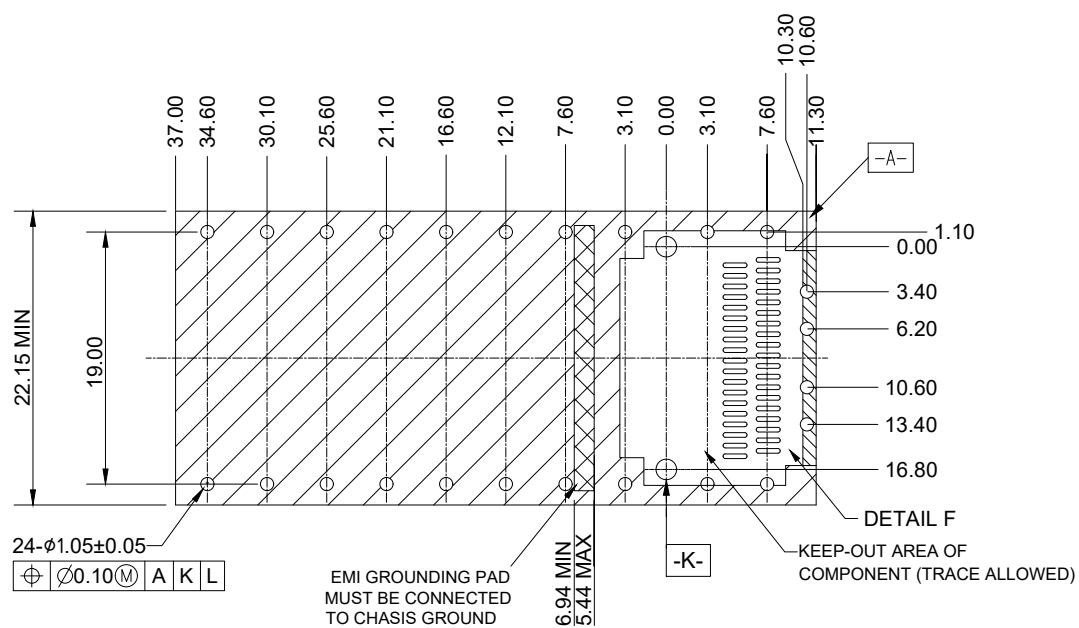
RECOMMENDED PCB LAYOUT FOR SINGLE SIDE



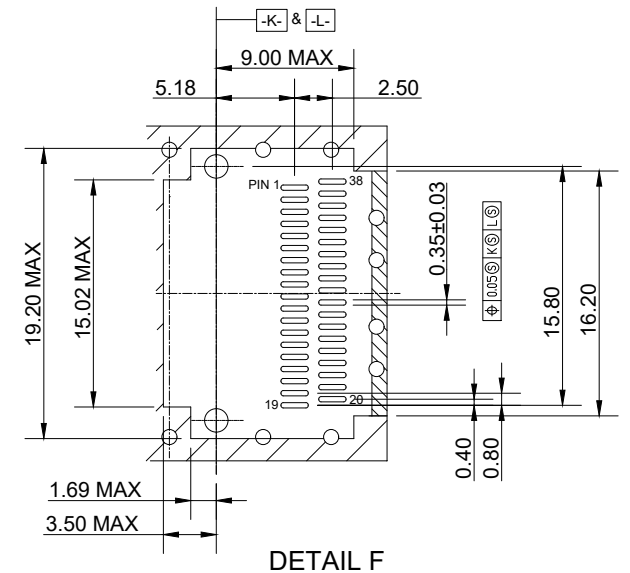
DETAIL E

		UNIT	mm
		REVISION	D
PRODUCT		QSFP+ 1X1 CAGE	
DWG NO.		PART NO.	
EZQS-1PN1-01			
PROJECTION	SCALE	SHEET	2 OF 4
		TOLERANCES X±0.25 XX±0.20 XXX±0.10 ANGLES±5°	

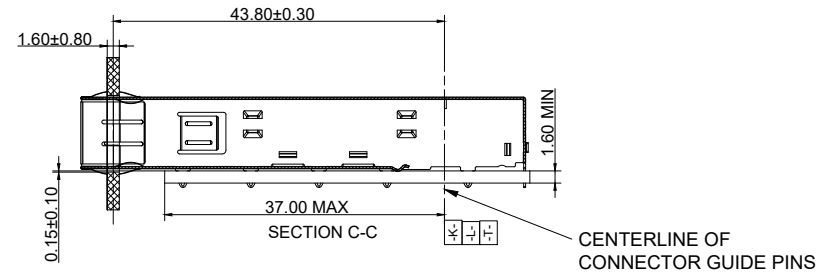
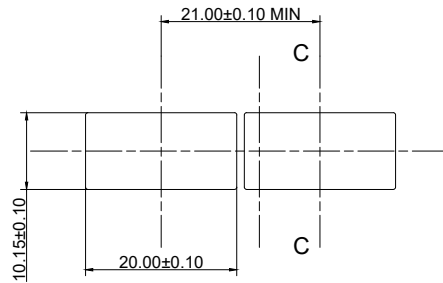
1 2 3 4 5 6



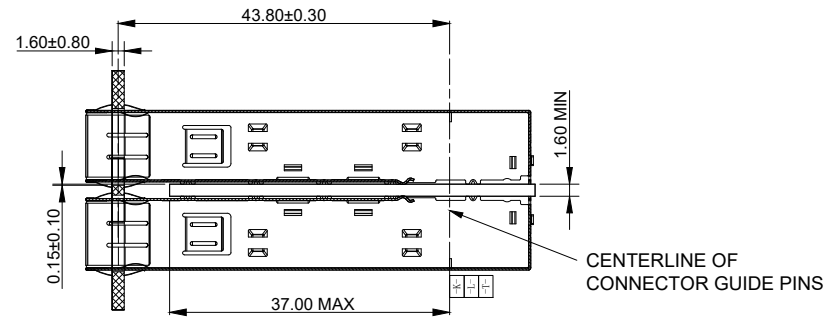
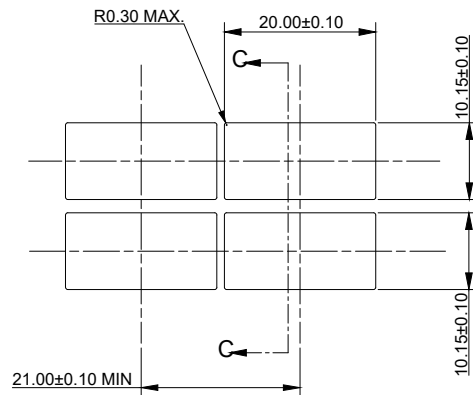
RECOMMENDED PCB LAYOUT FOR DOUBLE SIDE



 E.S. GLOBAL TOP		UNIT	mm
		REVISION	D
PRODUCT		QSFP+ 1X1 CAGE	
DWG NO.	PART NO.	TOLERANCES X ± 0.25 XX ± 0.20 XXX ± 0.10 ANGLES $\pm 5^\circ$	
EZQS-1PN1-01			
PROJECTION	SCALE	SHEET	3 OF 4



RECOMMENDED PANEL OPENING FOR ONE SIDE



RECOMMENDED PANEL OPENING FOR DOUBLE SIDE

NOTES:

1. SEE QSFP MSA SPECIFICATION FOR BEZEL LOCATION TOLERANCE
2. DATUM -A- IS TIP SURFACE OF HOST BOARD PER MSA
3. FINISHED HOLE SIZE (AFTER PLATING)
4. DATUM -K- IS HOST BOARD THRE HOLE #1 TO ACCEPT CONNECTOR GUIDE POST PER MSA
5. DATUM -L- IS HOST BOARD THRE HOLE #2 TO ACCEPT CONNECTOR GUIDE POST PER MSA
6. DATUM -T- IS HARD STOP ON CAGE PER MSA

			UNIT	mm
			REVISION	D
PRODUCT			QSFP+ 1X1 CAGE	
DWG NO.		PART NO.		
EZQS-1PN1-01				
PROJECTION	SCALE	SHEET		
		4 OF 4		
			TOLERANCES	
			X±0.25 XX±0.20 XXX±0.10 ANGLES±5°	