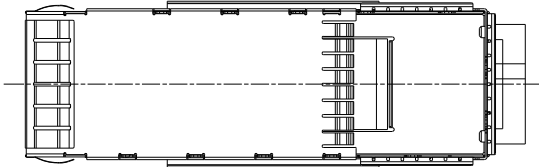
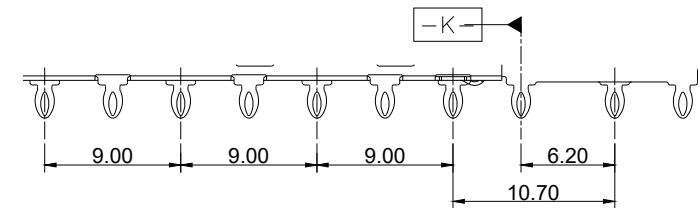
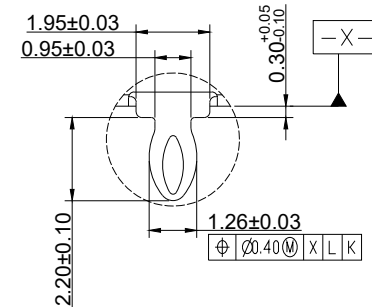
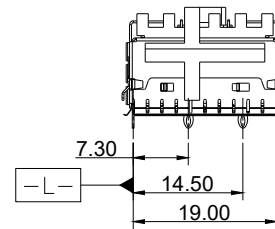
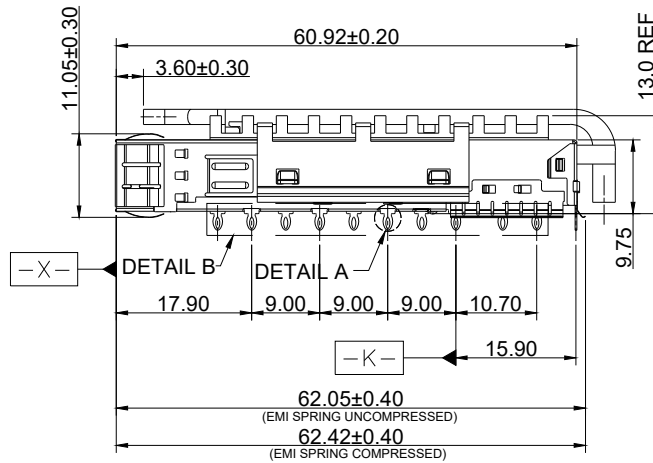
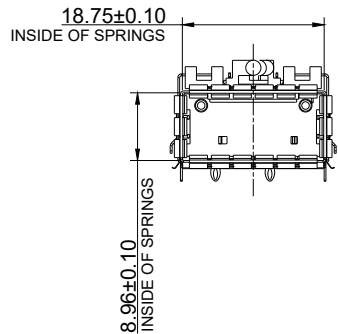
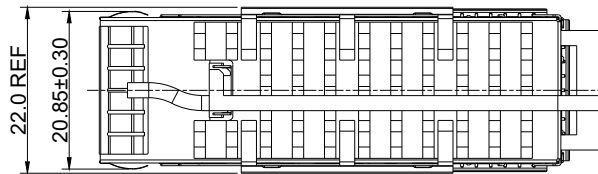


- NOTES:
- CAGE : COPPER ALLOY
 - EMI SPRING : BERYLLIUM COPPER
 - HEAT SINK : COPPER
 - HEAT SINK CLIP : STEEL
 - PLATING : 0.762µm Min. NICKLE OVER ALL
FOR CAGE AND EMI SPRING



 E.S. GLOBAL TOP		UNIT	mm
		REVISION	X
PRODUCT		TOLERANCES	
QSFP28 1X1 CAGE		.0 ± 0.25 .00 ± 0.13 .000 ± 0.05 ANGLES ± 2°	
DWG NO.	PART NO.	PROJECTION	
EZQS10-1PH1-01		1 OF 3	
PROJECTION	SCALE	SHEET	
			

