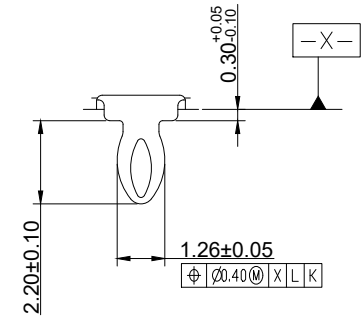
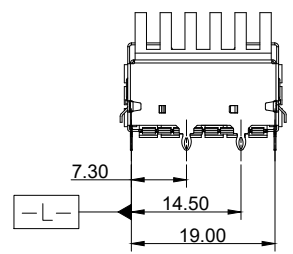
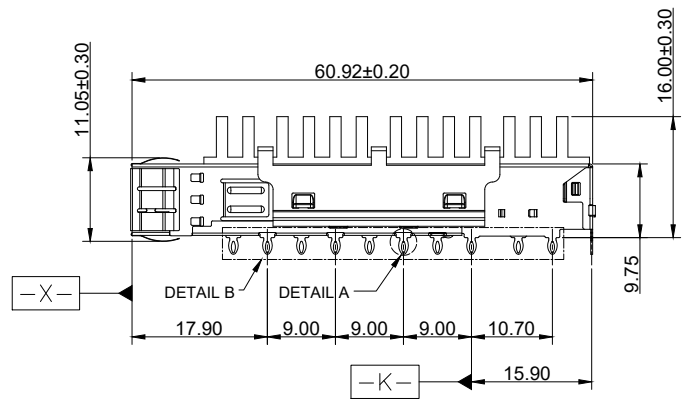
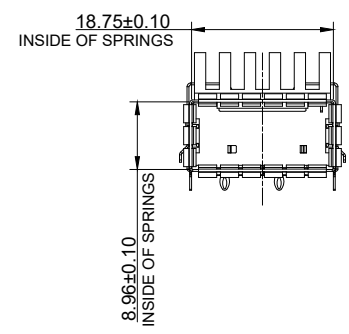
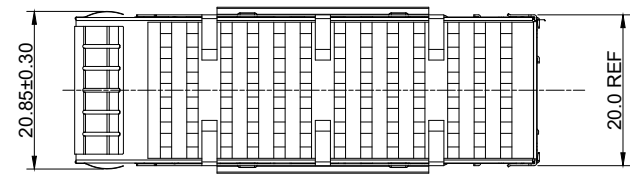
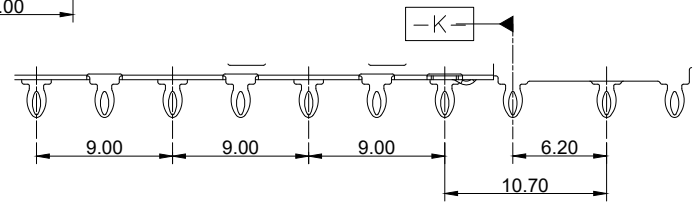


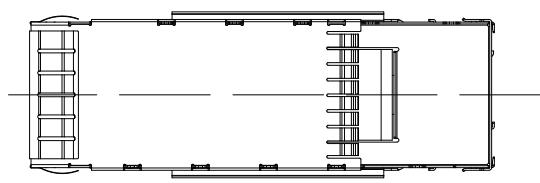
- NOTES:
- CAGE : COPPER ALLOY
  - EMI SPRING : BERYLLIUM COPPER
  - HEAT SINK : COPPER
  - HEAT SINK CLIP : STEEL
  - PLATING : 0.762µm Min. NICKLE OVER ALL  
FOR CAGE AND EMI SPRING



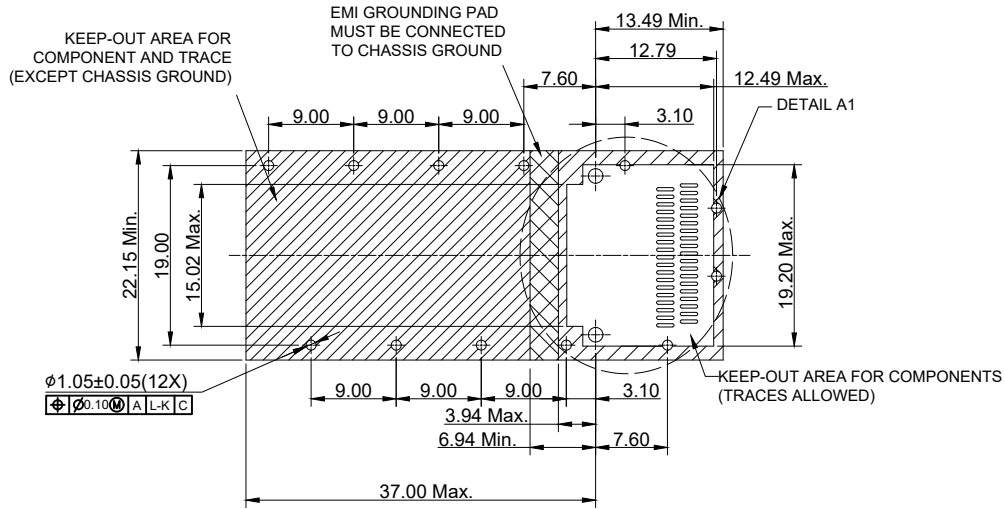
DETAIL A



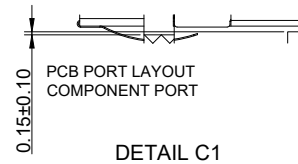
DETAIL B



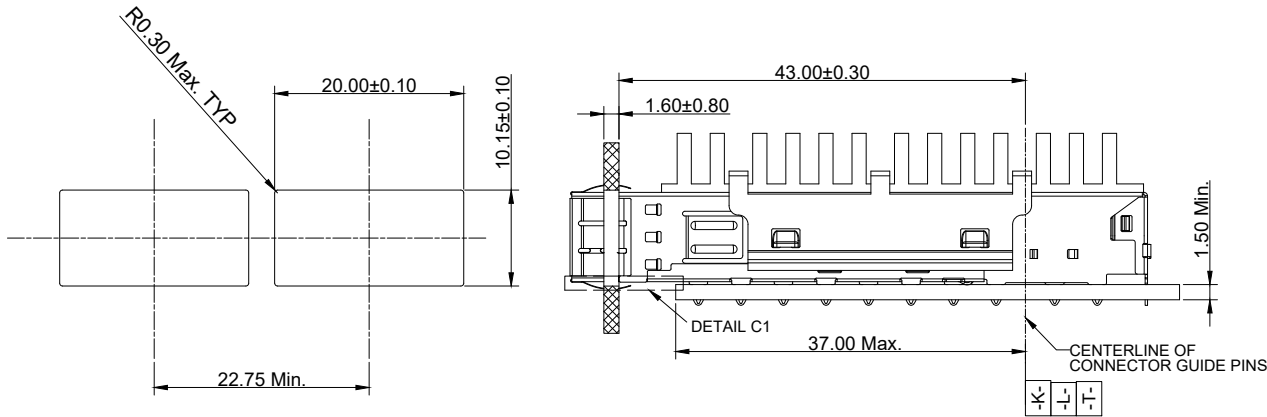
		UNIT	mm
		REVISION	A
PRODUCT		QSFP28 1X1 CAGE	
DWG NO.	PART NO.	TOLERANCES .0 ± 0.25 .00 ± 0.13 .000 ± 0.05 ANGLES ± 2°	
EZQS10-1PH1-02			
PROJECTION	SCALE		
		1 OF 3	



RECOMMENDED PCB LAYOUT FOR SINGLE SIDE

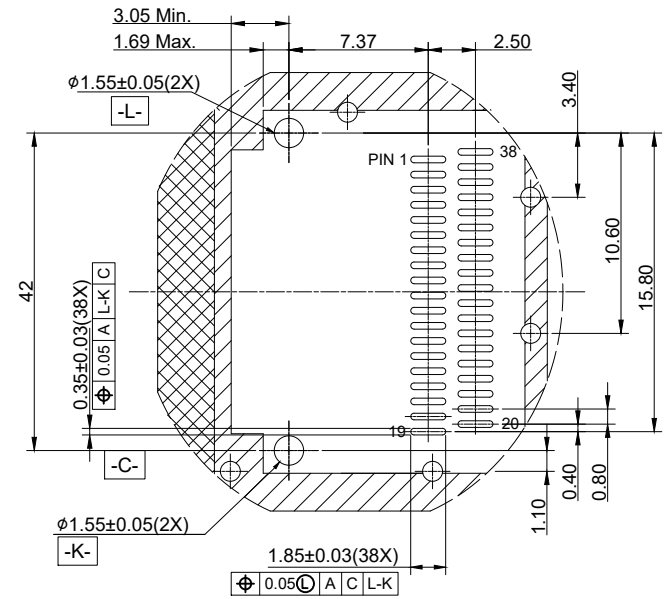


DETAIL C1



RECOMMENDED PCB LAYOUT FOR SINGLE SIDE

- NOTES:
- SEE QSFP MSA SPECIFICATION FOR BEZEL LOCATION TOLERANCE
  - DATUM -A- : TIP SURFACE OF HOST BOARD PER MSA FINISHED HOLE SIZE (AFTER PLATING)
  - DATUM -K- : HOST BOARD THREE HOLE #1 TO ACCEPT CONNECTOR GUIDE POST PER MSA
  - DATUM -L- : HOST BOARD THREE HOLE #2 TO ACCEPT CONNECTOR GUIDE POST PER MSA
  - DATUM -T- : HARD STOP ON CAGE PER MSA



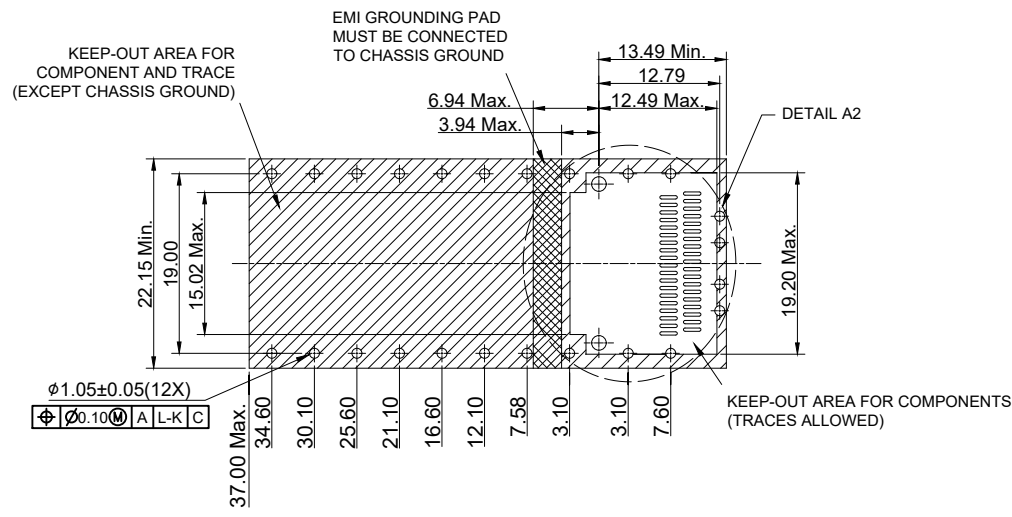
DETAIL A1

		UNIT	mm
		REVISION	A
PRODUCT		TOLERANCES	
EZQS10-1PH1-02		.0 ± 0.25 .00 ± 0.13 .000 ± 0.05 ANGLES ± 2°	
DWG NO.	PART NO.	PROJECTION	SCALE
EZQS10-1PH1-02			
SHEET		2 OF 3	

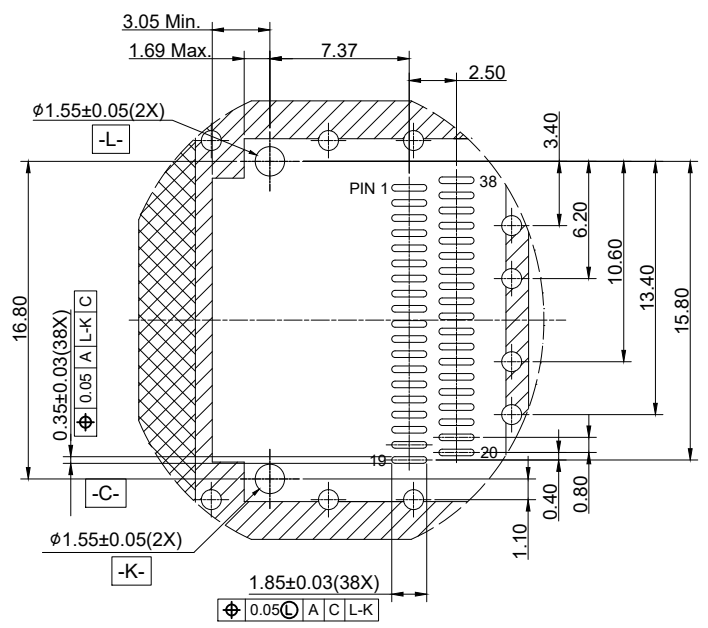
1 2 3 4 5 6

A

A



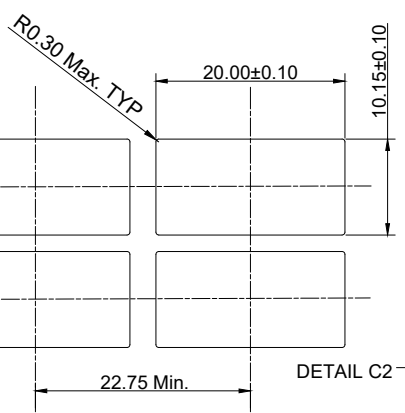
RECOMMENDED PCB LAYOUT FOR DOUBLE SIDE



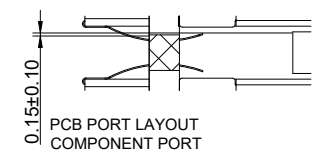
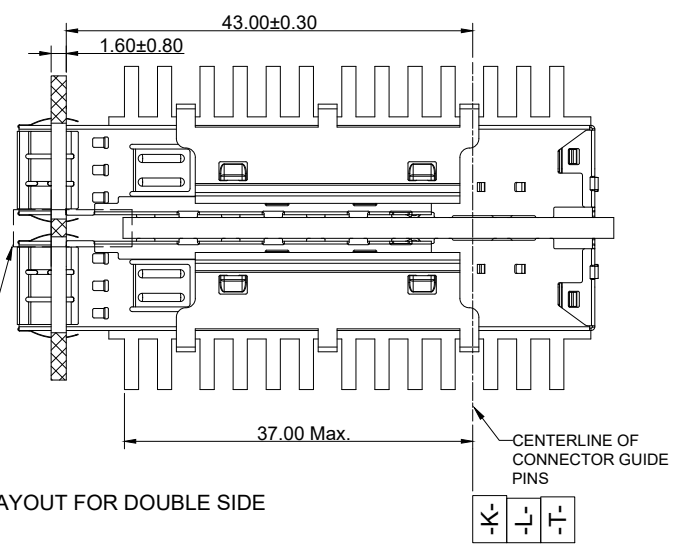
DETAIL A2

B

B



RECOMMENDED PCB LAYOUT FOR DOUBLE SIDE



DETAIL C2

C

C

D

D

			UNIT	mm
			REVISION	A
PRODUCT			TOLERANCES	
EZQS10-1PH1-02			.0 $\pm$ 0.25 .00 $\pm$ 0.13 .000 $\pm$ 0.05 ANGLES $\pm$ 2°	
PART NO.		SHEET		
QSQS10-1PH1-02		3 OF 3		
PROJECTION	SCALE	SHEET		
		3 OF 3		

1 2 3 4 5 6