

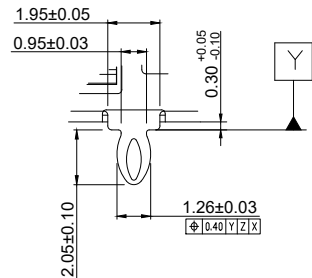
1 2 3 4 5 6

A

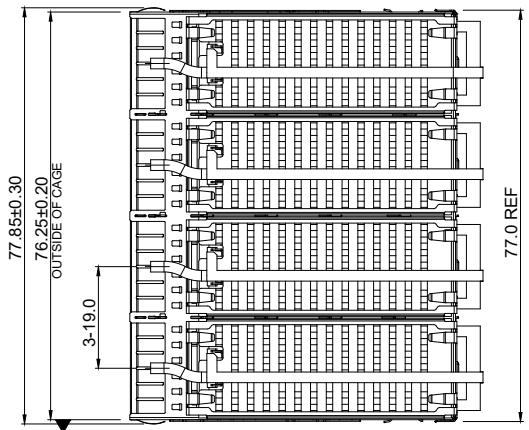
B

C

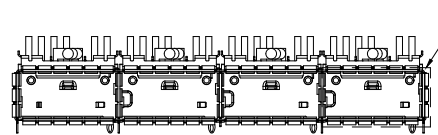
D



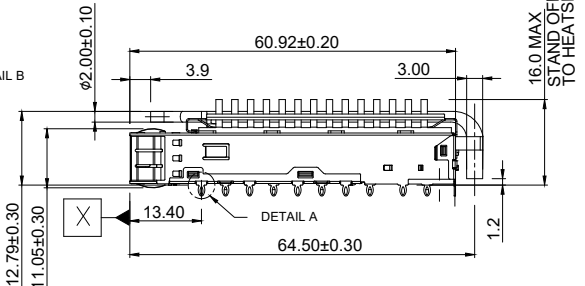
DETAIL A



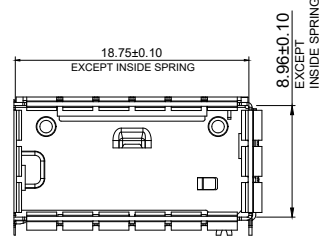
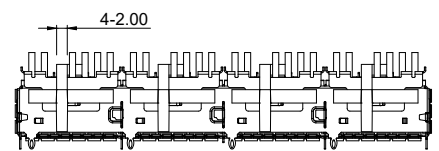
X



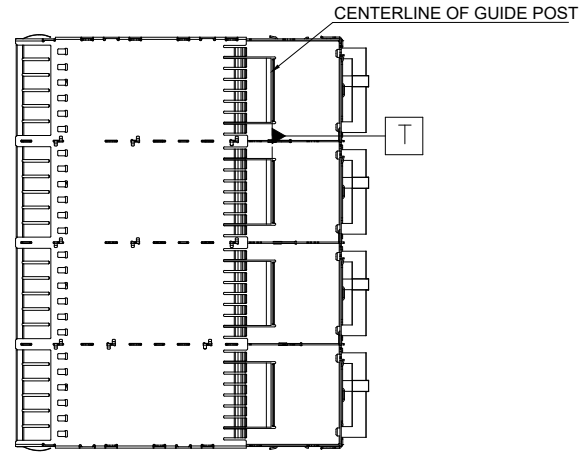
DETAIL B



DETAIL A



DETAIL B

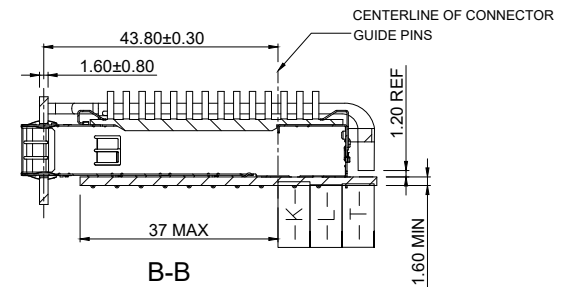
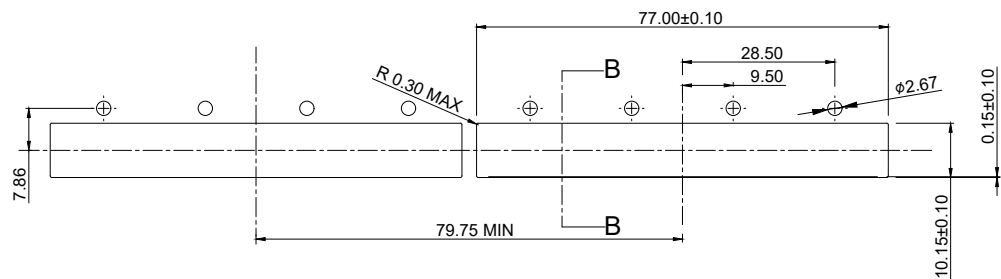


NOTE
 MATERIAL : COPPER ALLOY, 30~80u" Ni PLATING
 CAGE : COPPER ALLOY, 30~80u" Ni PLATING
 EMI SPRING : BERYLLIUM COPPER, 1.27~2.032um Ni PLATING
 HEAT SINK : ALUMINUM
 HEAT SINK CLIP : STEEL
 LIGHT PIPE : POLYCARBONATE TRANSPARENT

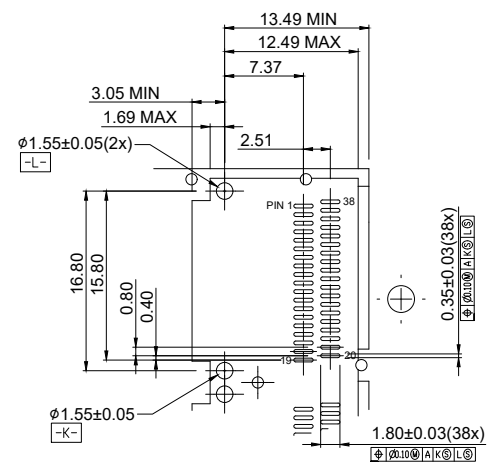
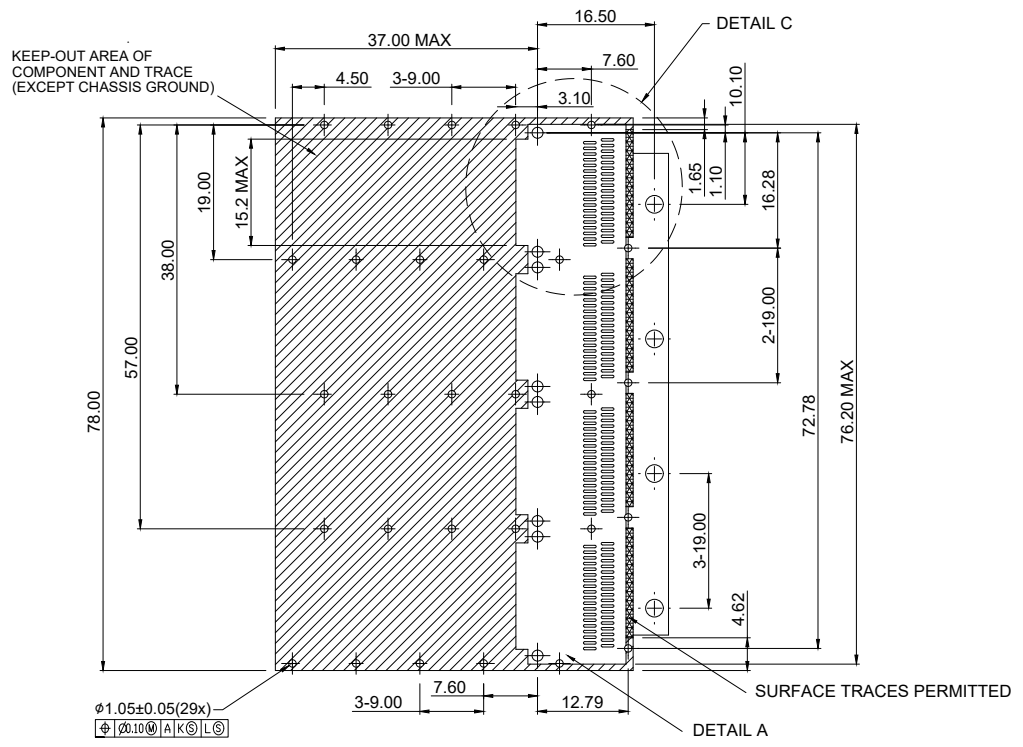
1. SEE QSFP MSF SPECIFICATION FOR BEZEL LOCATION TOLERANCE
2. DATUM A IS TIP SURFACE OF HOST BOARD PEA MSA
3. FINISHED HOLE SIZE (AFTER PLATING)
4. DATUM K IS HOST BOARD THREE HOLE #1 TO ACCEPT CONNECTOR GUIDE POST PER MSA
5. DATUM L IS HOST BOARD THREE HOLE #2 TO ACCEPT CONNECTOR GUIDE POST PER MSA
6. DATUM T IS HARS STOP ON CAGE PER MSA

		UNIT	mm
		REVISION	X1
PRODUCT		QSFP28 1x4 CAGE	
DWG NO.	EZQS10-4PH2-01	PART NO.	
PROJECTION		SCALE	SHEET
		1 OF 3	
		X±0.25 XX±0.13 XXX±0.10 ANGLES±2°	

1 2 3 4 5 6



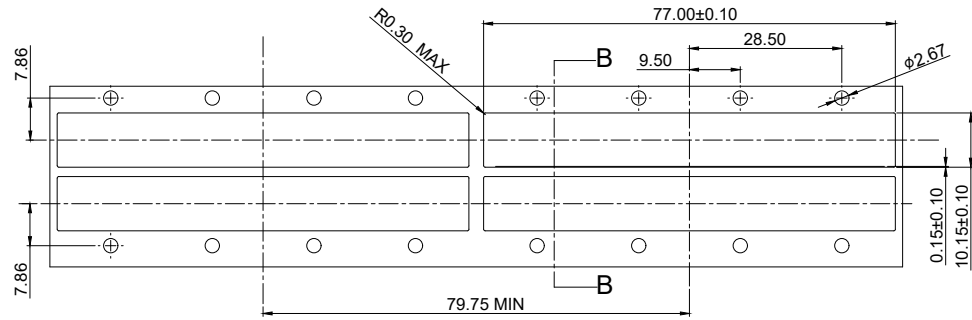
RECOMMENDED PANEL OPENING FOR SINGLE SIDE



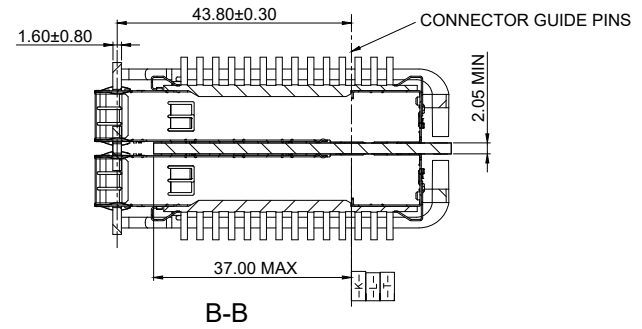
RECOMMENDED PCB LAYOUT

DETAIL C

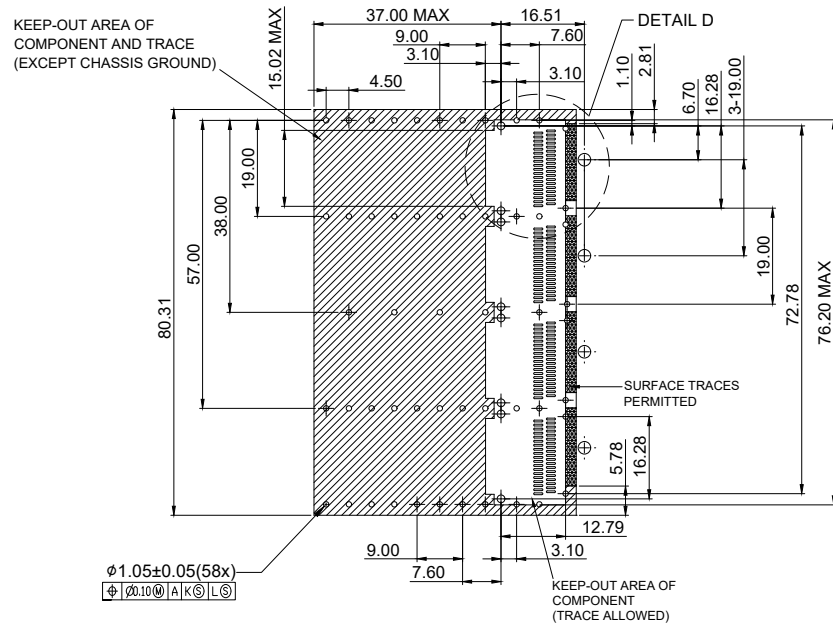
		UNIT	mm
		REVISION	X1
PRODUCT		TOLERANCES	
QSFP28 1x4 CAGE		X±0.25 XX±0.13 XXX±0.10 ANGLES±2°	
DWG NO.	PART NO.		
EZQS10-4PH2-01			
PROJECTION	SCALE	SHEET	
		2 OF 3	



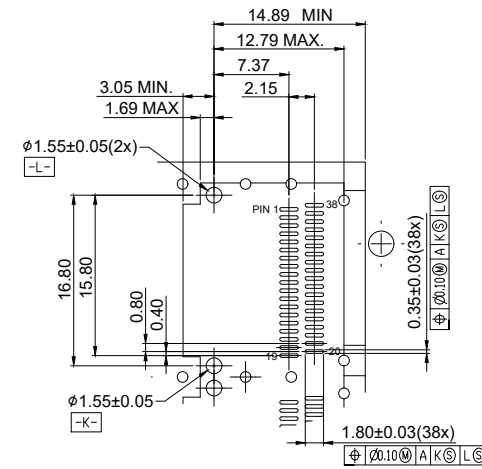
RECOMMENDED PANEL OPENING FOR DOUBLE SIDE




B-B



RECOMMENDED PCB LAYOUT



DETAIL D

 E.S. GLOBAL TOP		UNIT	mm
		REVISION	X1
PRODUCT		TOLERANCES	
EZQS10-4PH2-01		X±0.25 XX±0.13 XXX±0.10 ANGLES±2°	
DWG NO.	PART NO.	PROJECTION	SHEET
EZQS10-4PH2-01		SCALE	3 OF 3