

RECOMMENDED PANEL CUT OUT

NOTES:

MECHANICAL

- HOUSING : THERMOPLASTIC UL94V-0 BLACK
- CONTACT : PHOSPHOR BRONZE
- CONTACT PLATING : SELECTIVE GOLD 6 MICRO-INCHS
Min. IN CONTACT AREA
- SHIELD : BRASS
- SHIELD PLATING : NICKEL


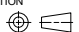
ENVIRONMENTAL

- STORAGE TEMPERATURE : -40°C~+85°C
- OPERATION TEMPERATURE : 0°C~+70°C

LED SPECIFICATION				
STANDARD LED	WAVELENGTH	FORWARD CURRENT	FORWARD V(Max.)	TYP
GREEN	565nm	20mA	2.4V	2.2V
YELLOW	590nm	20mA	2.5V	2.1V

WITH A FORWARD CURRENT OF 20mA

PARAMETER	SPECIFICATIONS	
TURN RATIO @100KHz	1.00±2%	
PRIMARY INDUCTANCE	180uH Min. @100KHz, 0.1V	
POLARITY	PER SCHEMATIC	
INSERTION LOSS	1-125MHz	-1.0dB Max.
	1-40MHz	-20dB Min.
RETURN LOSS	40-200MHz	-20+15*LOG ₁₀ (f/40) dB Min.
	1-125MHz	-30dB Min.
CROSS TALK	1-125MHz	-30dB Min.
COMMON MODE REJECTION RATIO	30-200MHz	-30dB Min.
ISOLATION	1500V RMS. Min. @60s	

 E.S. GLOBAL TOP		UNIT	mm
		REVISION	A
PRODUCT		RJ45 2X4 ICM 2.5G Base-T	
DWG NO.	EZI25S-2410N21-02	PART NO.	
PROJECTION		SCALE	SHEET 1 OF 2

UNIT
mm

REVISION
A

PRODUCT
RJ45 2X4 ICM 2.5G Base-T

DWG NO.
EZI25S-2410N21-02

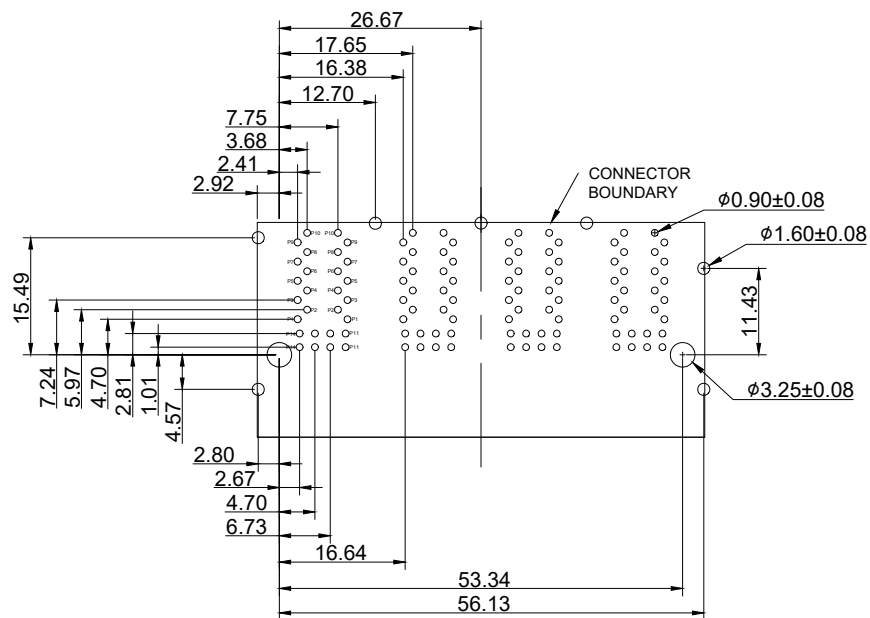
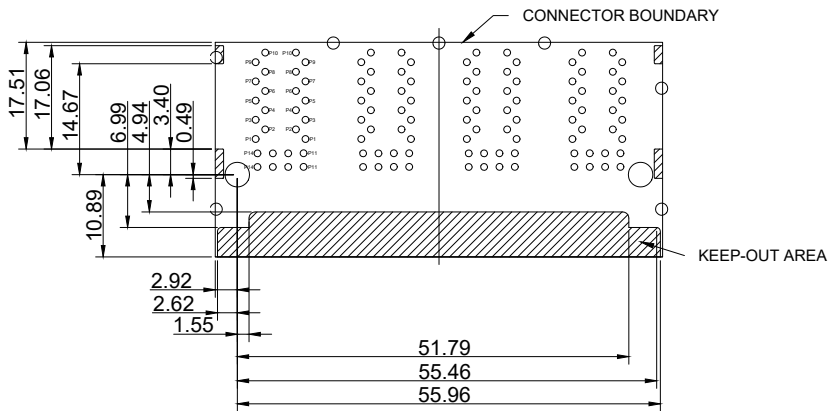
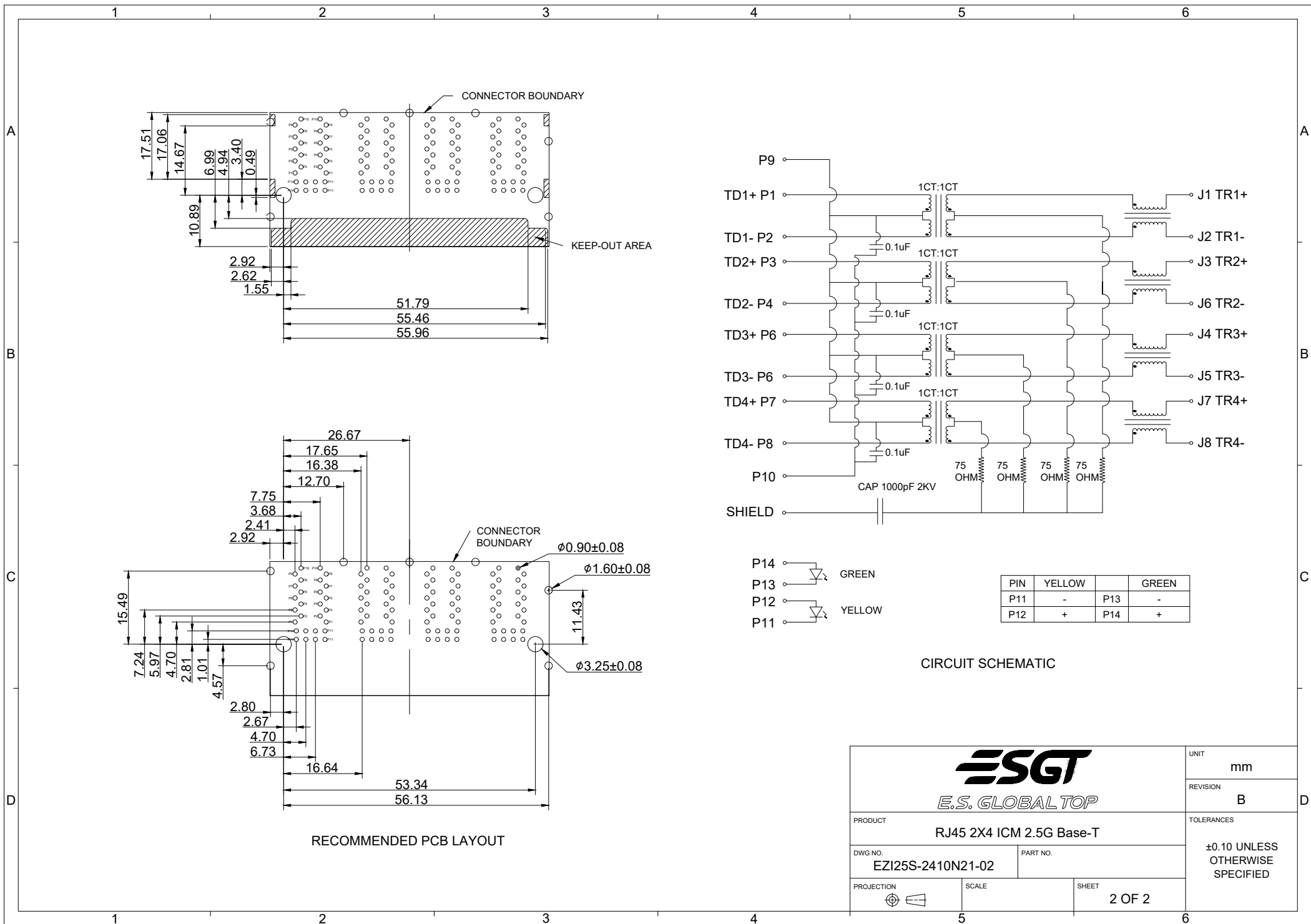
PART NO.

PROJECTION

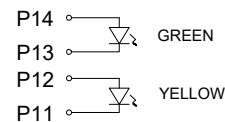
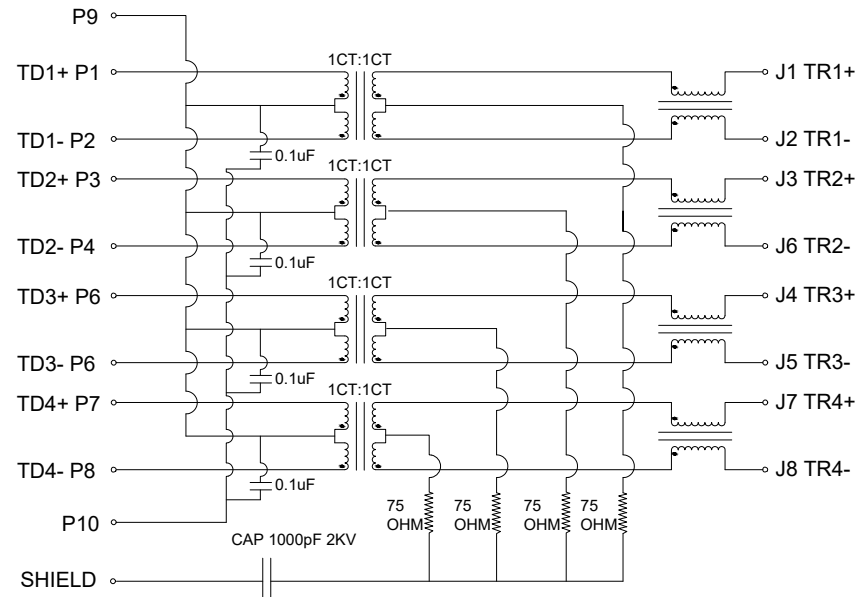

SCALE

SHEET
1 OF 2

TOLERANCES
±0.10 UNLESS
OTHERWISE
SPECIFIED



RECOMMENDED PCB LAYOUT



PIN	YELLOW		GREEN
P11	-	P13	-
P12	+	P14	+

CIRCUIT SCHEMATIC

 E.S. GLOBAL TOP		UNIT	mm
		REVISION	B
PRODUCT		RJ45 2X4 ICM 2.5G Base-T	
DWG NO.		PART NO.	
EZI25S-2410N21-02			
PROJECTION	SCALE	SHEET	
		2 OF 2	
		TOLERANCES	
		±0.10 UNLESS OTHERWISE SPECIFIED	