

NOTES:

MECHANICAL

HOUSING : THERMOPLASTIC UL94V-0 BLACK

CONTACT : PHOSPHOR BRONZE

CONTACT PLATING : SELECTIVE GOLD 30 MICRO-INCHS
Min. IN CONTACT AREA

SHIELD : BRASS

SHIELD PLATING : NICKEL

ENVIRONMENTAL

STORAGE TEMPERATURE : -40°C~+85°C

OPERATION TEMPERATURE : -40°C~+85°C

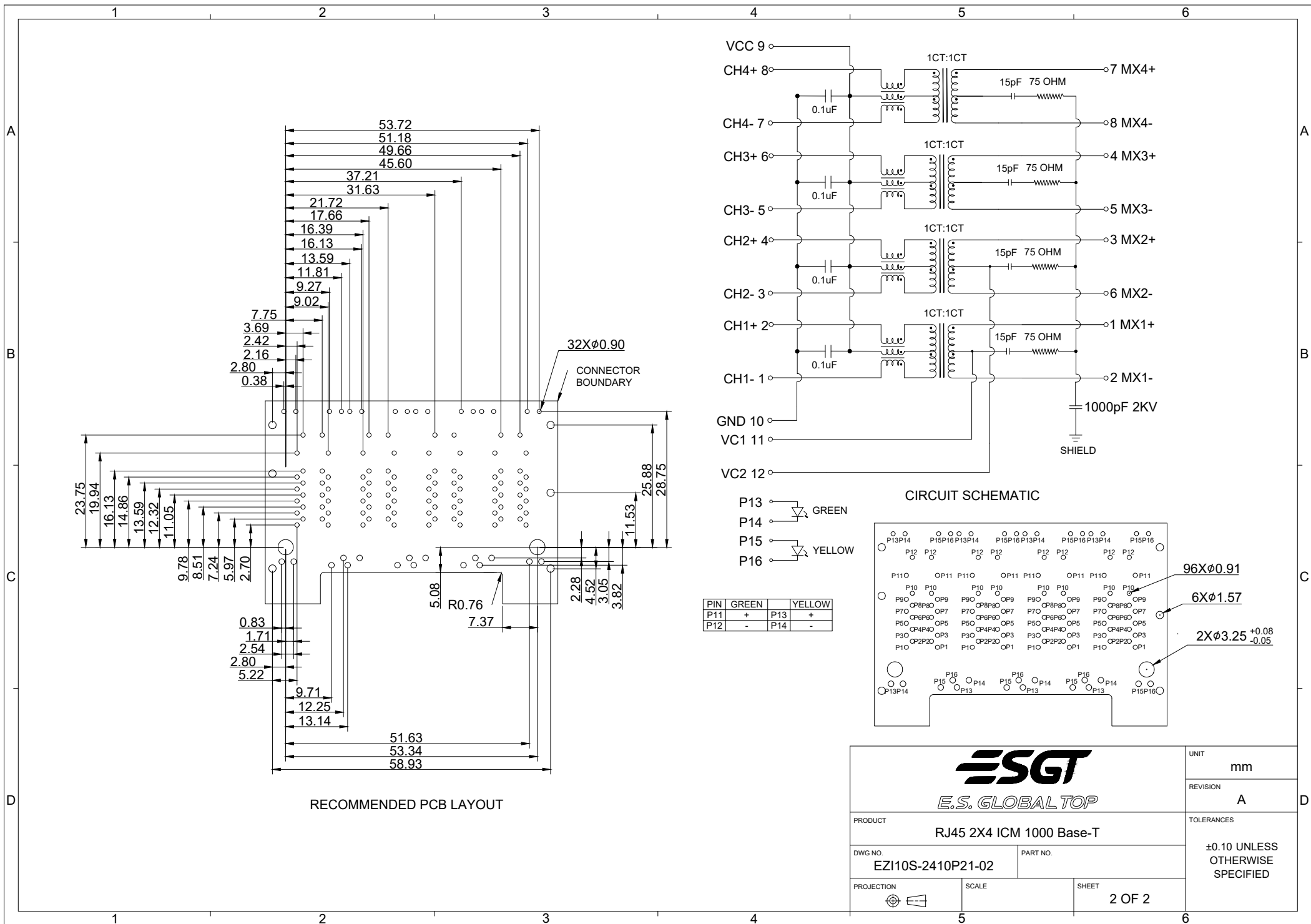
PARAMETER	SPECIFICATIONS	
TURN RATIO @100KHz	(P2~P1);(J1~J2) = 1:1±5% (P4~P3);(J3~J6) = 1:1±5% (P6~P5);(J4~J5) = 1:1±5% (P8~P7);(J7~J8) = 1:1±5%	
PRIMARY INDUCTANCE	350uH Min. @100KHz, 0.1V 8mA DC BIAS	
DC RESISTANCE	1.2OHMS Max.	
INSERTION LOSS	1-100MHz	-1.0dB Max.
	100-125MHz	-1.2dB Max.
RETURN LOSS	1-40MHz	-16dB Max.
	40-60MHz	-12dB Max.
	60-80MHz	-10dB Max.
	80-100MHz	-8dB Max.
CROSS TALK	1-100MHz	-30dB Min.
COMMON MODE REJECTION RATIO	1-100MHz	-30dB Min.
ISOLATION	2250V DC	
DC CURRENT / VOLTAGE RATING - PSE PINS	720mA @57V(CONTINUOUS)	

LED SPECIFICATION				
STANDARD LED	WAVELENGTH	FORWARD CURRENT	FORWARD V(Max.)	TYP
GREEN	565nm	20mA	2.4V	2.2V
YELLOW	590nm	20mA	2.5V	2.1V

WITH A FORWARD CURRENT OF 20mA

RECOMMENDED PANEL CUT OUT

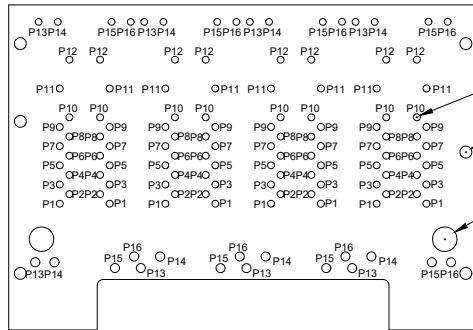
		UNIT	mm
		REVISION	A
PRODUCT		RJ45 2X4 ICM 1000 Base-T	
DWG NO.	EZI10S-2410P21-02	PART NO.	
PROJECTION	SCALE	SHEET	1 OF 2
		TOLERANCES	
		±0.10 UNLESS OTHERWISE SPECIFIED	



RECOMMENDED PCB LAYOUT

CIRCUIT SCHEMATIC

PIN	GREEN	YELLOW	
P11	+	P13	+
P12	-	P14	-



		UNIT	mm
		REVISION	A
PRODUCT		RJ45 2X4 ICM 1000 Base-T	
DWG NO.	EZ110S-2410P21-02	PART NO.	
PROJECTION		SCALE	SHEET
		2 OF 2	
		TOLERANCES	
		±0.10 UNLESS OTHERWISE SPECIFIED	