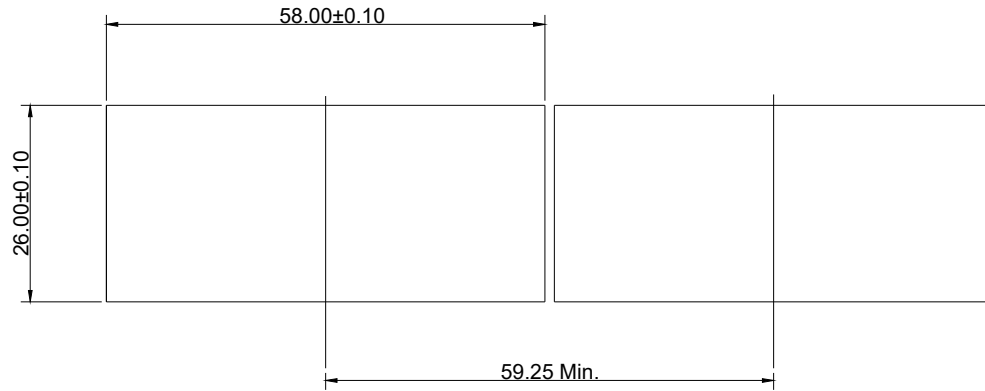
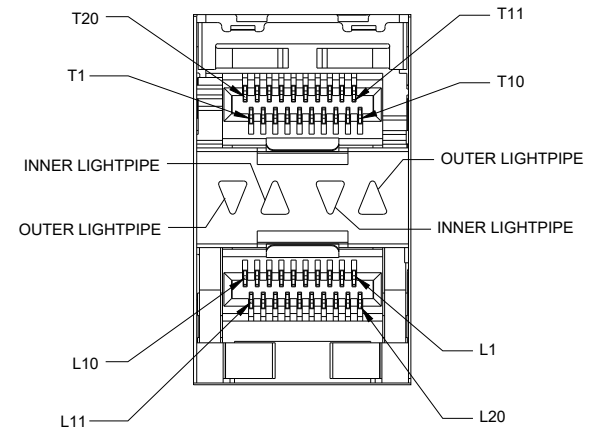


- NOTES:
- HOUSING : LCP UL94V-0, BLACK
 - INSERT : THERMOPLASTIC UL94V-0 BLACK
 - CONTACT : PHOSPHOR BRONZE
 - CAGE : COPPER ALLOY
 - LIGHT PIPES : POLYCARBONATE UL94V-0
TRANSPARENT
 - LIGHT PIPE HOUSING : PBT UL94V-0 BLACK
 - CONTACT MATING AREA : GOLD PLATING OVER NICKEL
1.27µm Min.
 - CONNECTER PRESS-FIT PINS : 2.54µm Min. MATTE TIN
OVER 1.27 µm Min. NICKEL
 - INSERTION FORCE : 40N Max.
 - EXTRACTION FORCE : 11.5N Max.
 - DURABILITY : 100 CYCLES MIN.
 - LOW LEVEL CONTACT RESITANCE(LLCR) : ΔR 10 MΩ Max. FOR SHIELD AND
SIGNAL CONTACTS
 - DIELECTRIC WITHSTANDING : 300V AC Max.
 - INSULATION RESISTANCE : 1x10⁹ OHMS Min.
 - OPERATION TEMPERATURE : -40°C~+85°C
 - STORAGE TEMPERATURE : -55°C~+105°C
 - CURRENT RATING : 0.5 AMPS Max.
 - VOLTAGE RATING : 30 VOLTS DC OR AC RMS. Max.

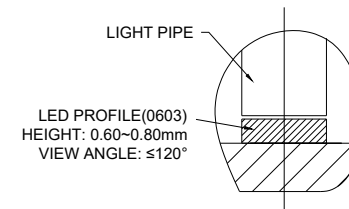
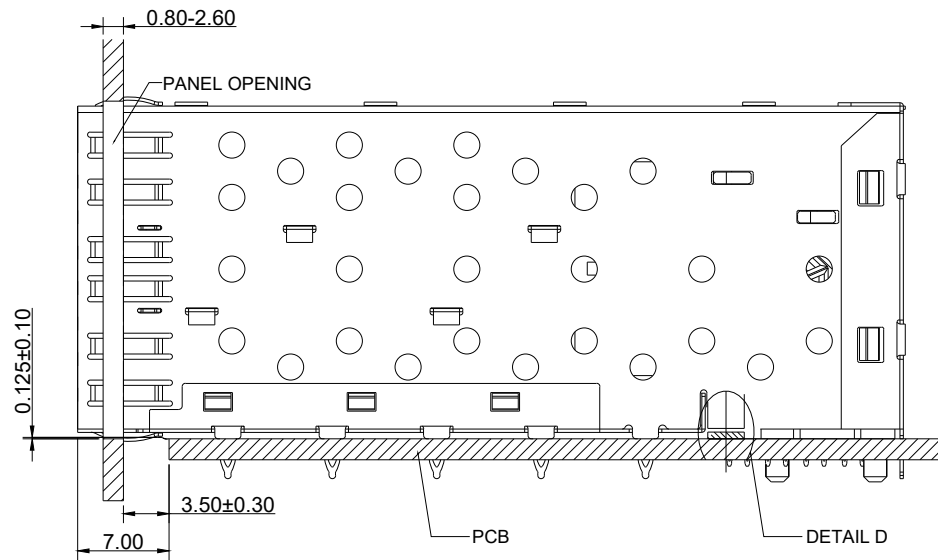
		UNIT	mm
		REVISION	G
PRODUCT		SFP 2X4 CAGE	
TOLERANCES		.0 ± 0.25 .00 ± 0.13 .000 ± 0.10 ANGLES ± 2°	
DWG NO.	EZS-24N21-01	PART NO.	
PROJECTION	SCALE	SHEET	1 OF 3



RECOMMENDED PANEL OPENING

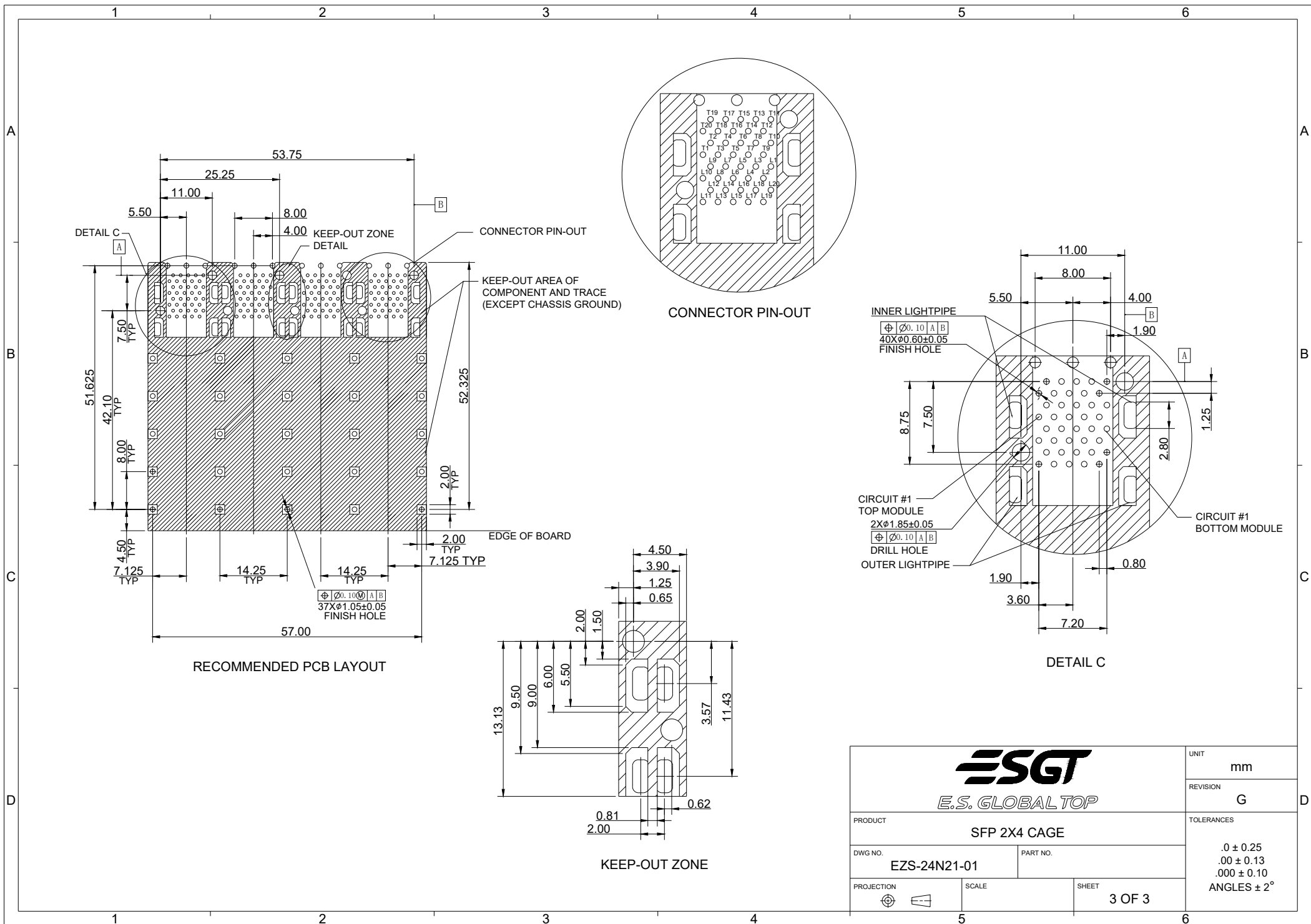


LED CONFIGURATION



DETAIL D

			UNIT	mm
			REVISION	G
PRODUCT			SFP 2X4 CAGE	
DWG NO.		PART NO.		TOLERANCES .0 ± 0.25 .00 ± 0.13 .000 ± 0.10 ANGLES ± 2°
EZS-24N21-01				
PROJECTION	SCALE	SHEET		
		2 OF 3		




RECOMMENDED PCB LAYOUT

CONNECTOR PIN-OUT

KEEP-OUT ZONE

DETAIL C

 E.S. GLOBAL TOP		UNIT	mm
		REVISION	G
PRODUCT	SFP 2X4 CAGE		TOLERANCES
DWG NO.	EZS-24N21-01	PART NO.	.0 ± 0.25 .00 ± 0.13 .000 ± 0.10 ANGLES ± 2°
PROJECTION	SCALE	SHEET	3 OF 3