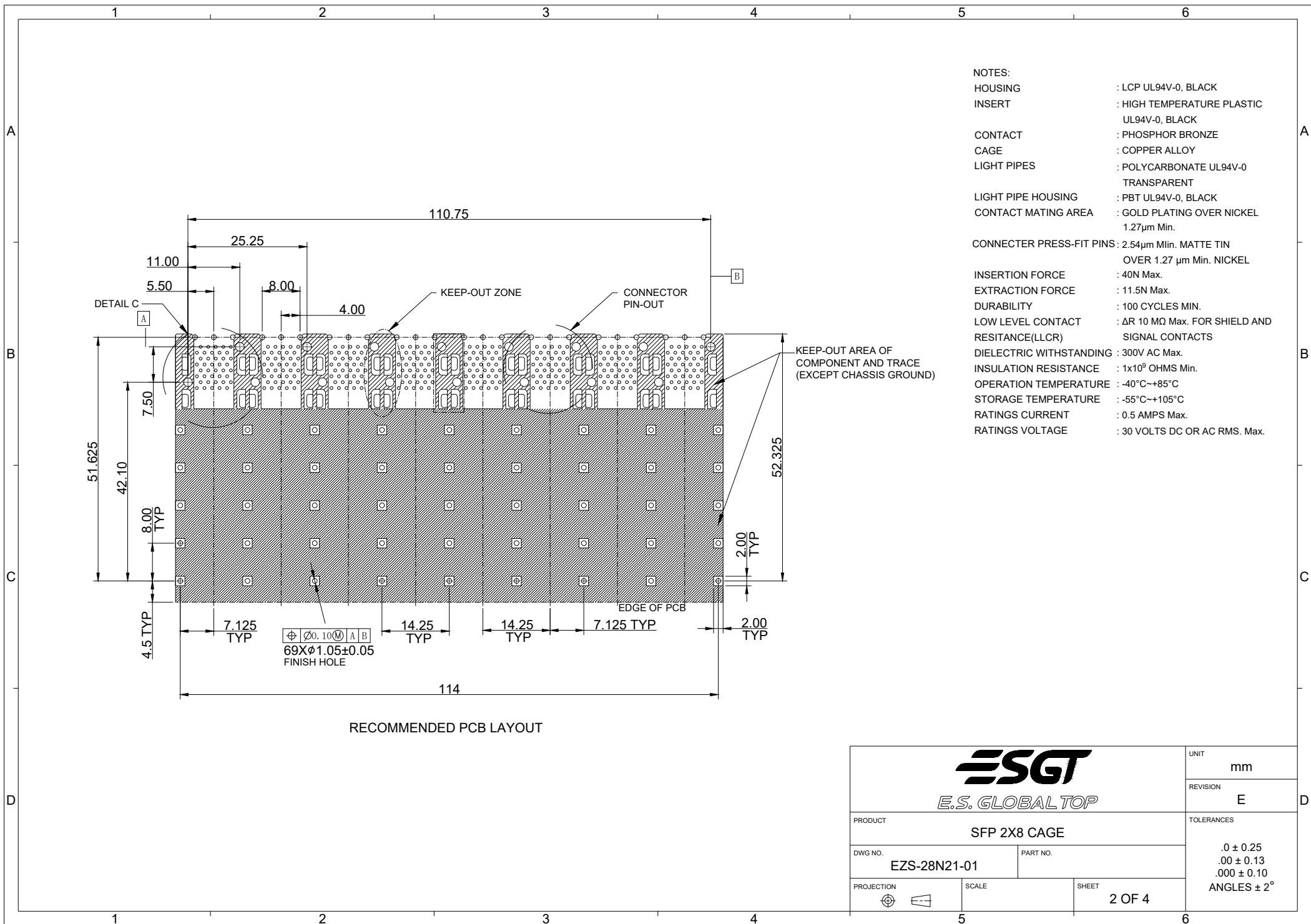


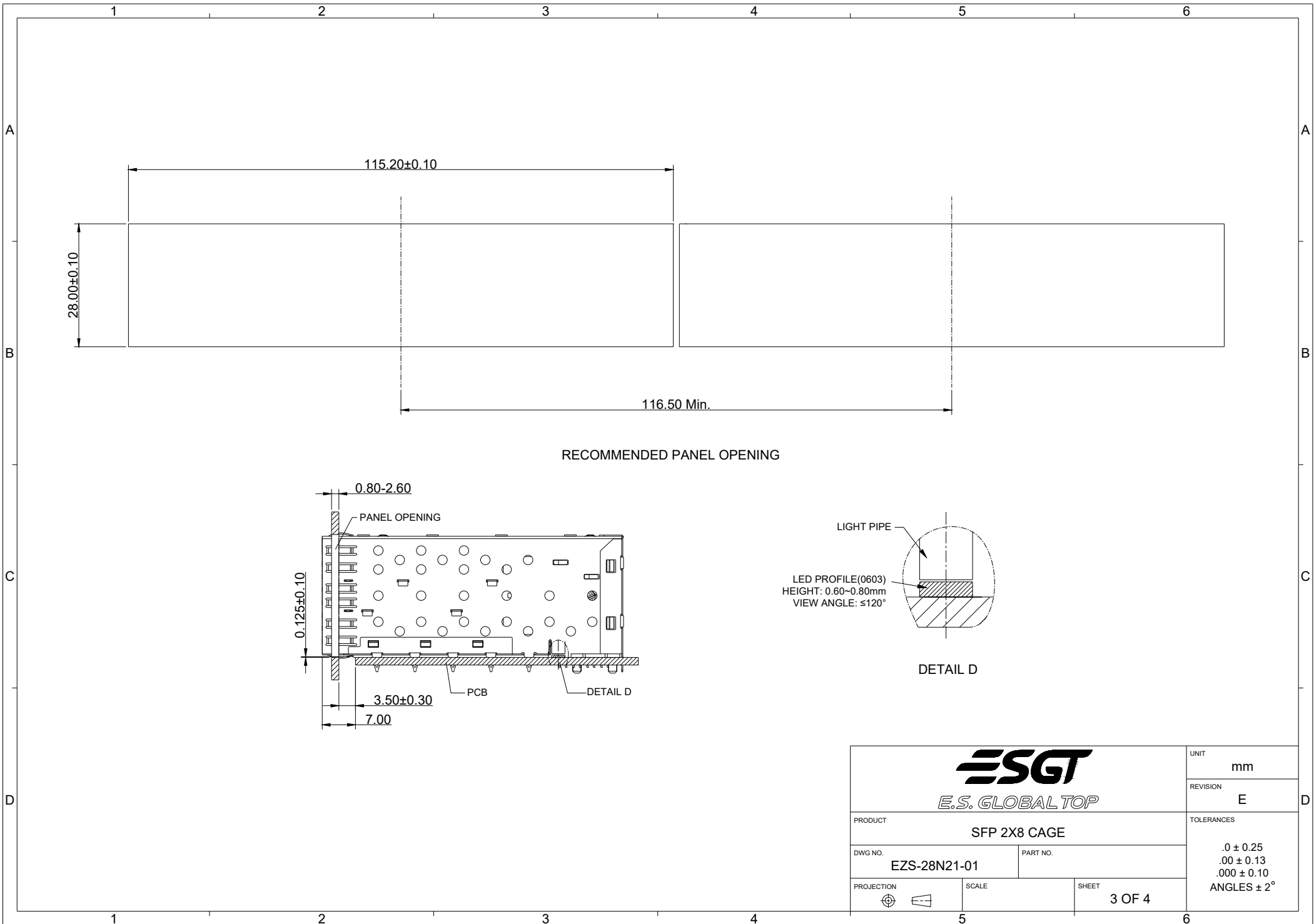
		UNIT	mm
		REVISION	E
PRODUCT		SFP 2X8 CAGE	
DWG NO.	EZS-28N21-01	PART NO.	
PROJECTION		SCALE	SHEET
			1 OF 4
		TOLERANCES	
		.0 ± 0.25	
		.00 ± 0.13	
		.000 ± 0.10	
		ANGLES ± 2°	



- NOTES:
- HOUSING : LCP UL94V-0, BLACK
 - INSERT : HIGH TEMPERATURE PLASTIC
UL94V-0, BLACK
 - CONTACT : PHOSPHOR BRONZE
 - CAGE : COPPER ALLOY
 - LIGHT PIPES : POLYCARBONATE UL94V-0
TRANSPARENT
 - LIGHT PIPE HOUSING : PBT UL94V-0, BLACK
 - CONTACT MATING AREA : GOLD PLATING OVER NICKEL
1.27µm Min.
 - CONNECTER PRESS-FIT PINS : 2.54µm Min. MATTE TIN
OVER 1.27 µm Min. NICKEL
 - INSERTION FORCE : 40N Max.
 - EXTRACTION FORCE : 11.5N Max.
 - DURABILITY : 100 CYCLES MIN.
 - LOW LEVEL CONTACT : ΔR 10 MΩ Max. FOR SHIELD AND
RESITANCE(LLCR) SIGNAL CONTACTS
 - DIELECTRIC WITHSTANDING : 300V AC Max.
 - INSULATION RESISTANCE : 1x10⁹ OHMS Min.
 - OPERATION TEMPERATURE : -40°C~+85°C
 - STORAGE TEMPERATURE : -55°C~+105°C
 - RATINGS CURRENT : 0.5 AMPS Max.
 - RATINGS VOLTAGE : 30 VOLTS DC OR AC RMS. Max.

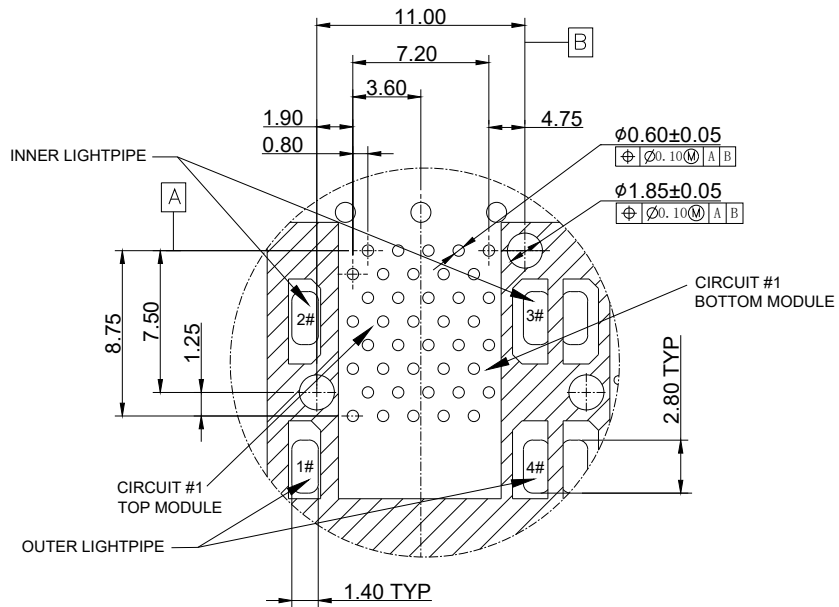
RECOMMENDED PCB LAYOUT

		UNIT	mm
		REVISION	E
PRODUCT		SFP 2X8 CAGE	
DWG NO.	EZS-28N21-01	PART NO.	
PROJECTION		SCALE	SHEET
			2 OF 4
		TOLERANCES	
		.0 ± 0.25	
		.00 ± 0.13	
		.000 ± 0.10	
		ANGLES ± 2°	

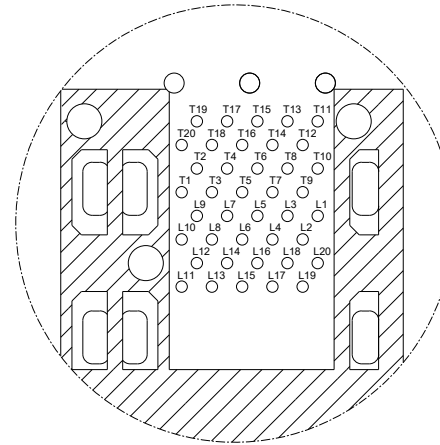


RECOMMENDED PANEL OPENING

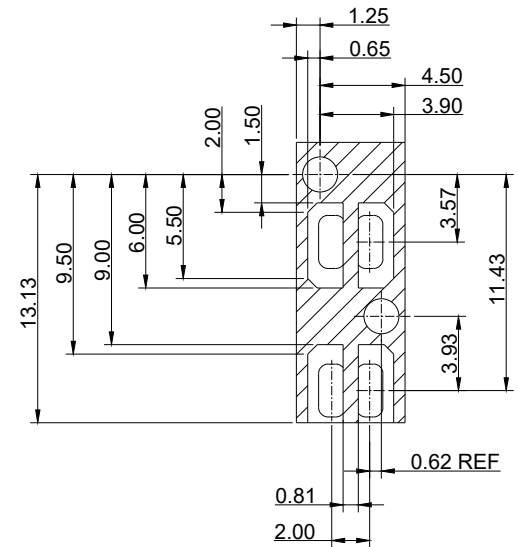
		UNIT	mm
		REVISION	E
PRODUCT		SFP 2X8 CAGE	
DWG NO.	EZS-28N21-01	PART NO.	
PROJECTION		SCALE	SHEET 3 OF 4
		TOLERANCES $.0 \pm 0.25$ $.00 \pm 0.13$ $.000 \pm 0.10$ ANGLES $\pm 2^\circ$	



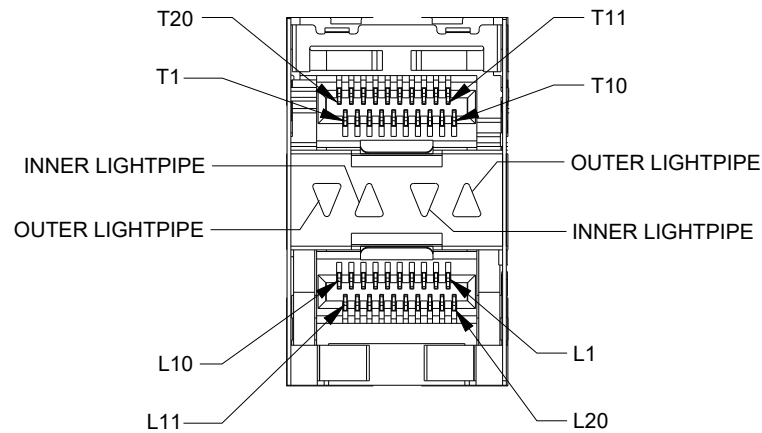
DETAIL C



CONNECTOR PIN-OUT



KEEP-OUT ZONE



LED CONFIGURATION

		UNIT	mm
		REVISION	E
PRODUCT		SFP 2X8 CAGE	
DWG NO.	EZS-28N21-01	PART NO.	
PROJECTION		SCALE	SHEET
		4 OF 4	
		TOLERANCES $.0 \pm 0.25$ $.00 \pm 0.13$ $.000 \pm 0.10$ ANGLES $\pm 2^\circ$	