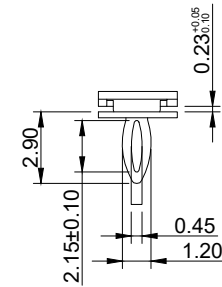
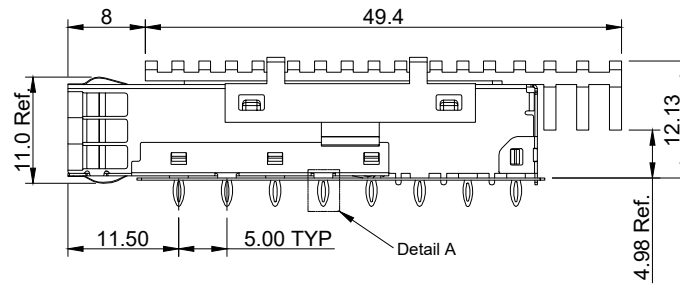
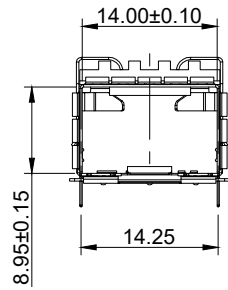
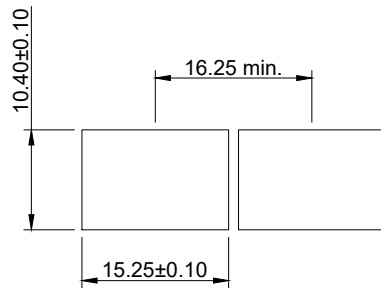
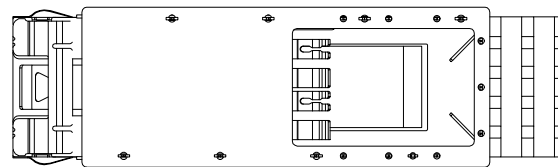




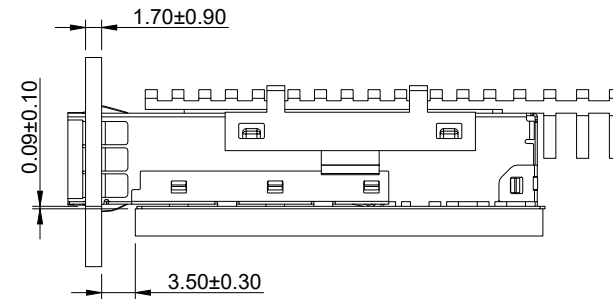
Cage: copper alloy Ni plating
 EMI springs: copper alloy Ni plating
 Heat Sink: aluminum Ni plating
 Heat sink clip: stainless steel
 Operating temperature: -40°C~+85°C
 Storage temperature: -55°~+105°C


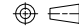


DETAIL A



RECOMMENDED PANEL OPENING



 E.S. GLOBAL TOP			UNIT	mm
			REVISION	A
PRODUCT			SFP28 1X1 Cage with Heat Sink	
DWG NO.			PART NO.	
EZS10-1PH1-01				
PROJECTION	SCALE	SHEET	1 OF 2	
				
			ANGLES ± 2°	

