

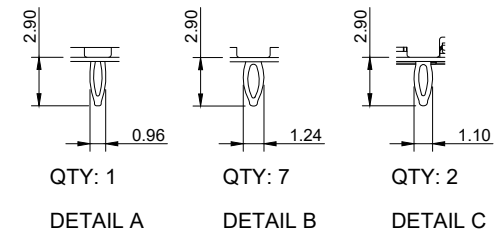
**NOTE**

**MATERIAL**

CAGE: COPPER ALLOY, Ni PLATED  
EMI SPRINGS: COPPER ALLOY, Ni PLATED  
GASKET: RF ABSORBER

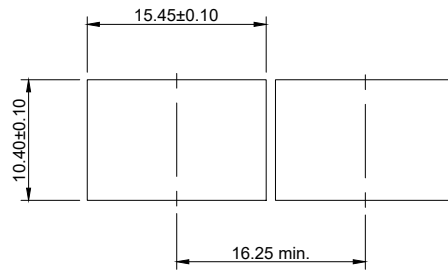
**ENVIRONMENTAL**

STORAGE TEMPERATURE: -55°C ~ +105°C  
OPERATION TEMPERATURE: -40°C ~ +85°C

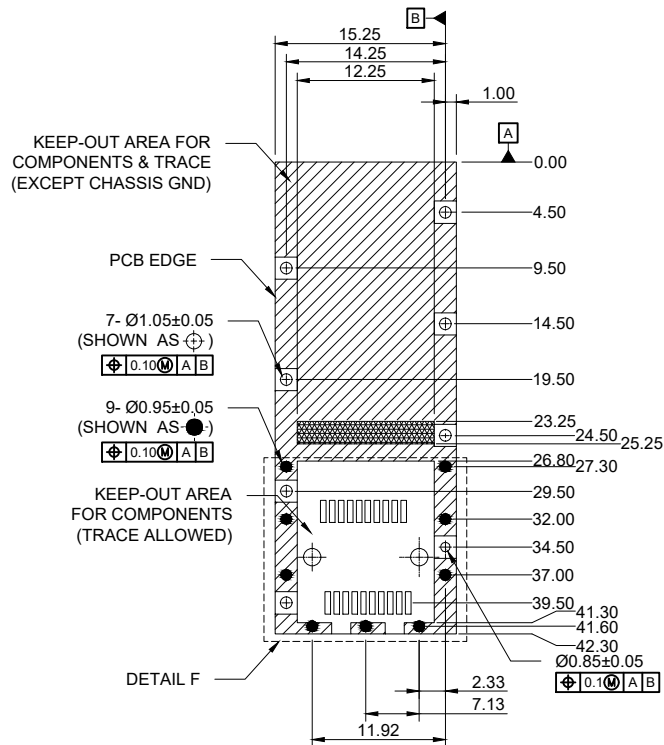
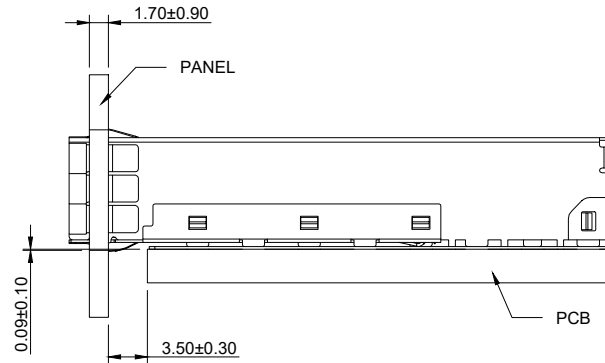


RECOMMENDED PANEL OPENING

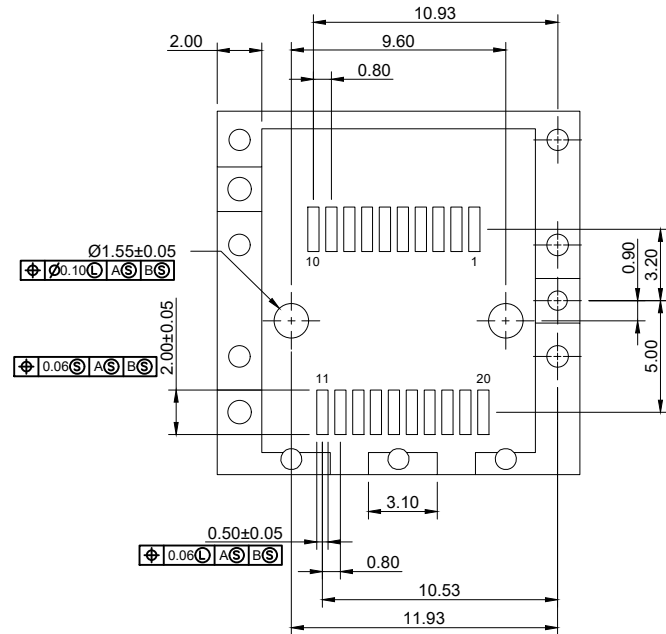
 <b>E.S. GLOBAL TOP</b>		UNIT	mm
		REVISION	A
PRODUCT		SFP28 1X1 CAGE WITH GASKET	
DWG NO.	EZS10-1PN1-02	PART NO.	
PROJECTION		SCALE	SHEET
			1 OF 2
		TOLERANCES	
		X ± 0.25	
		XX ± 0.13	
		XXX ± 0.10	
		ANGLES ± 2°	



RECOMMENDED PANEL OPENING



RECOMMENDED PCB LAYOUT



 <b>E.S. GLOBALTOP</b>		UNIT	mm
		REVISION	A
PRODUCT		SFP28 1X1 CAGE WITH GASKET	
DWG NO.	EZS10-1PN1-02	PART NO.	
PROJECTION		SCALE	SHEET
			2 OF 2
		TOLERANCES	
		X ± 0.25	
		XX ± 0.13	
		XXX ± 0.10	
		ANGLES ± 2°	