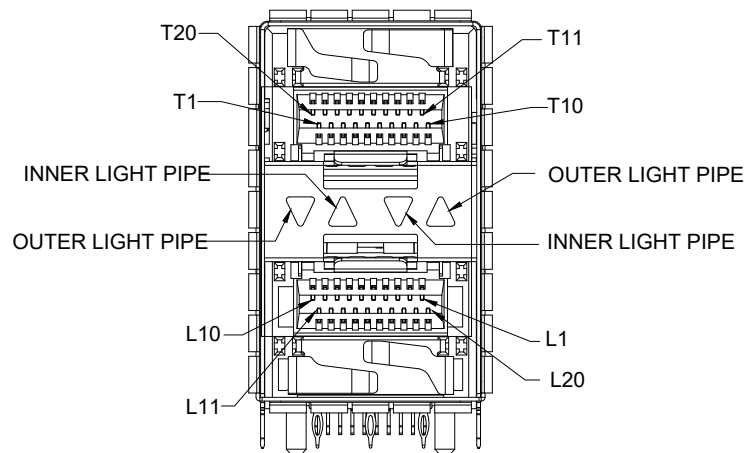
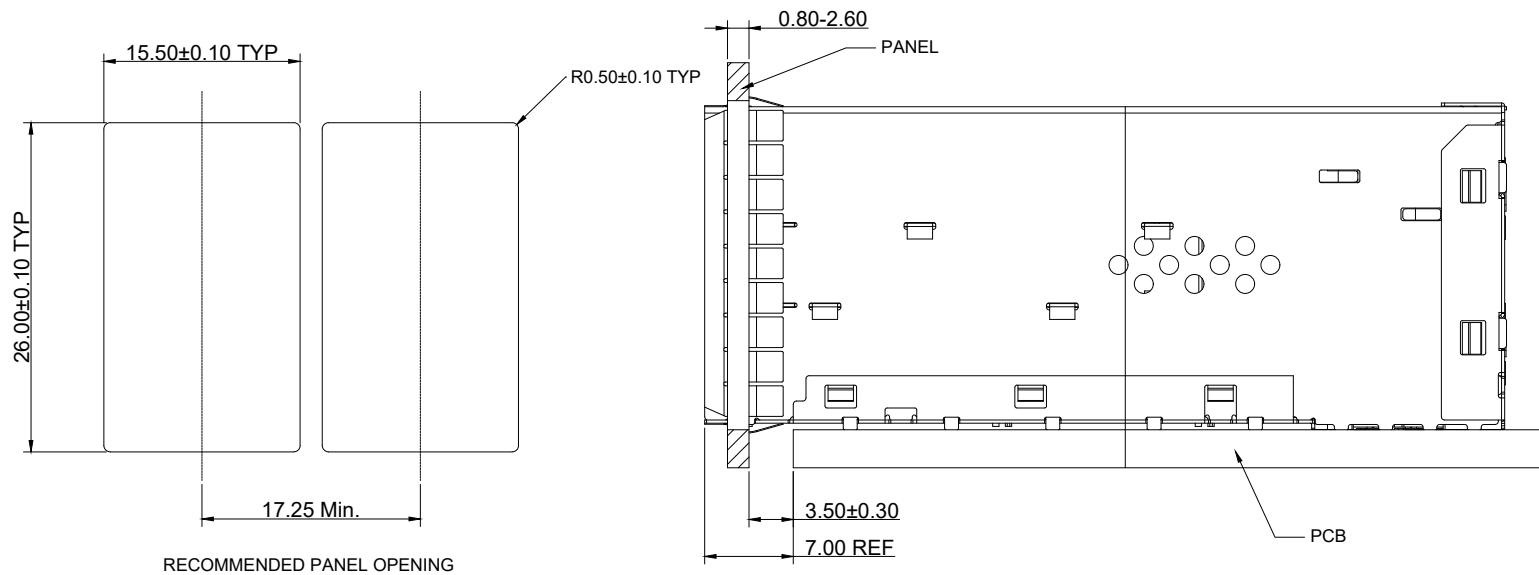


- NOTES:
- MECHANICAL:
- HOUSING : LCP UL94V-0 BLACK
 - INSERT : THERMOPLASTIC UL94V-0 BLACK
 - CONTACT : PHOSPHOR BRONZE
 - CAGE : COPPER ALLOY
 - LIGHT PIPES : POLYCARBONATE UL94V-0
 - LIGHT PIPE HOUSING : PBT UL94V-0 BLACK
 - EMI CLIP : COPPER ALLOY
 - CONTACT MATING AREA : GOLD PLATING 0.76µm Min.
OVER 1.27µm Min. NICKEL
 - CONTACT PRESS-FIT PINS : 1.27µm Min. MATTE TIN PLATING
OVER 1.27µm Min. NICKEL

		UNIT	mm
		REVISION	B
PRODUCT		SFP28 2X1 CAGE	
DWG NO.	EZS10-21N21-01	PART NO.	
PROJECTION	SCALE	SHEET	1 OF 3
		TOLERANCES	
		.0 ± 0.25	
		.00 ± 0.13	
		.000 ± 0.10	
		ANGLES ± 2°	



		UNIT	mm
		REVISION	B
PRODUCT		SFP28 2X1 CAGE	
DWG NO.		PART NO.	
EZS10-21N21-01			
PROJECTION	SCALE	SHEET	2 OF 3

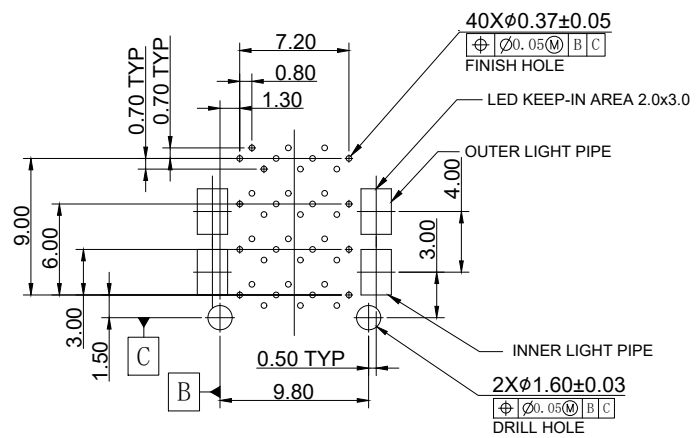
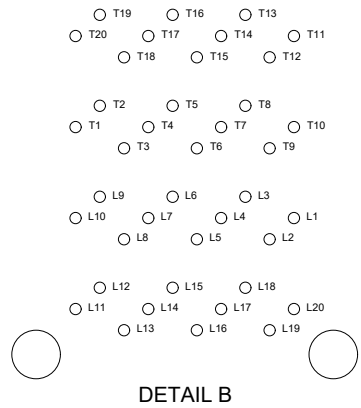
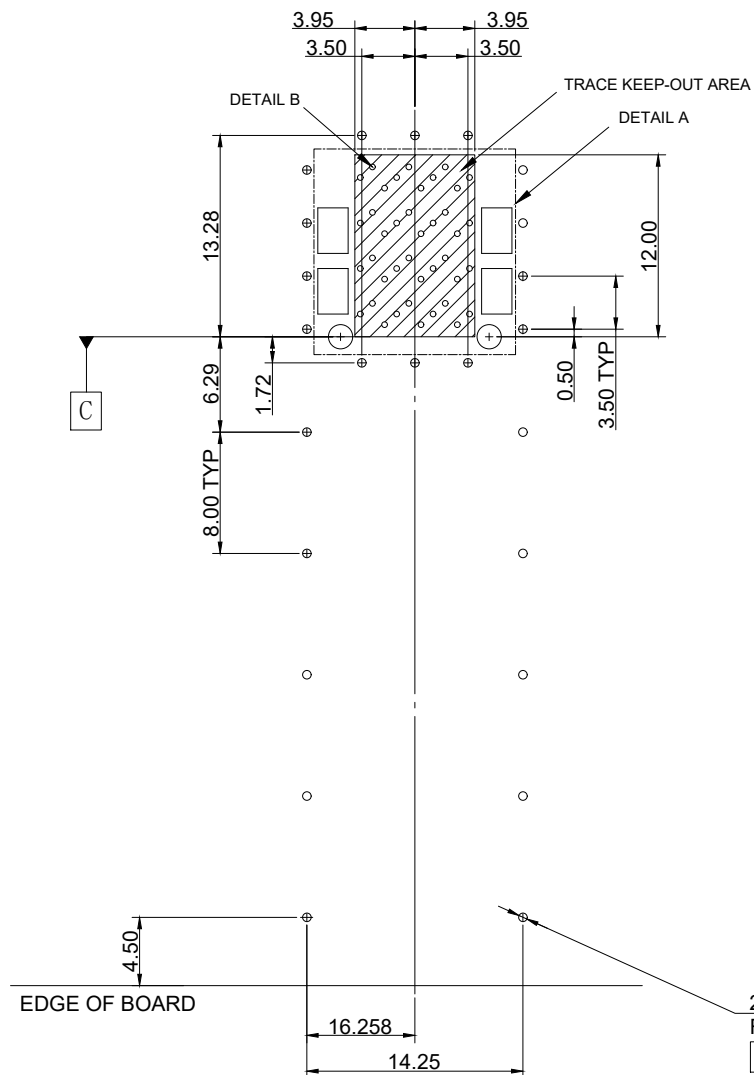
TOLERANCES

.0 ± 0.25

.00 ± 0.13

.000 ± 0.10

ANGLES ± 2°



		UNIT	mm
		REVISION	B
PRODUCT		SFP28 2X1 CAGE	
DWG NO.		PART NO.	
EZS10-21N21-01			
PROJECTION	SCALE	SHEET	3 OF 3
		TOLERANCES	
		.0 ± 0.25	
		.00 ± 0.13	
		.000 ± 0.10	
		ANGLES ± 2°	