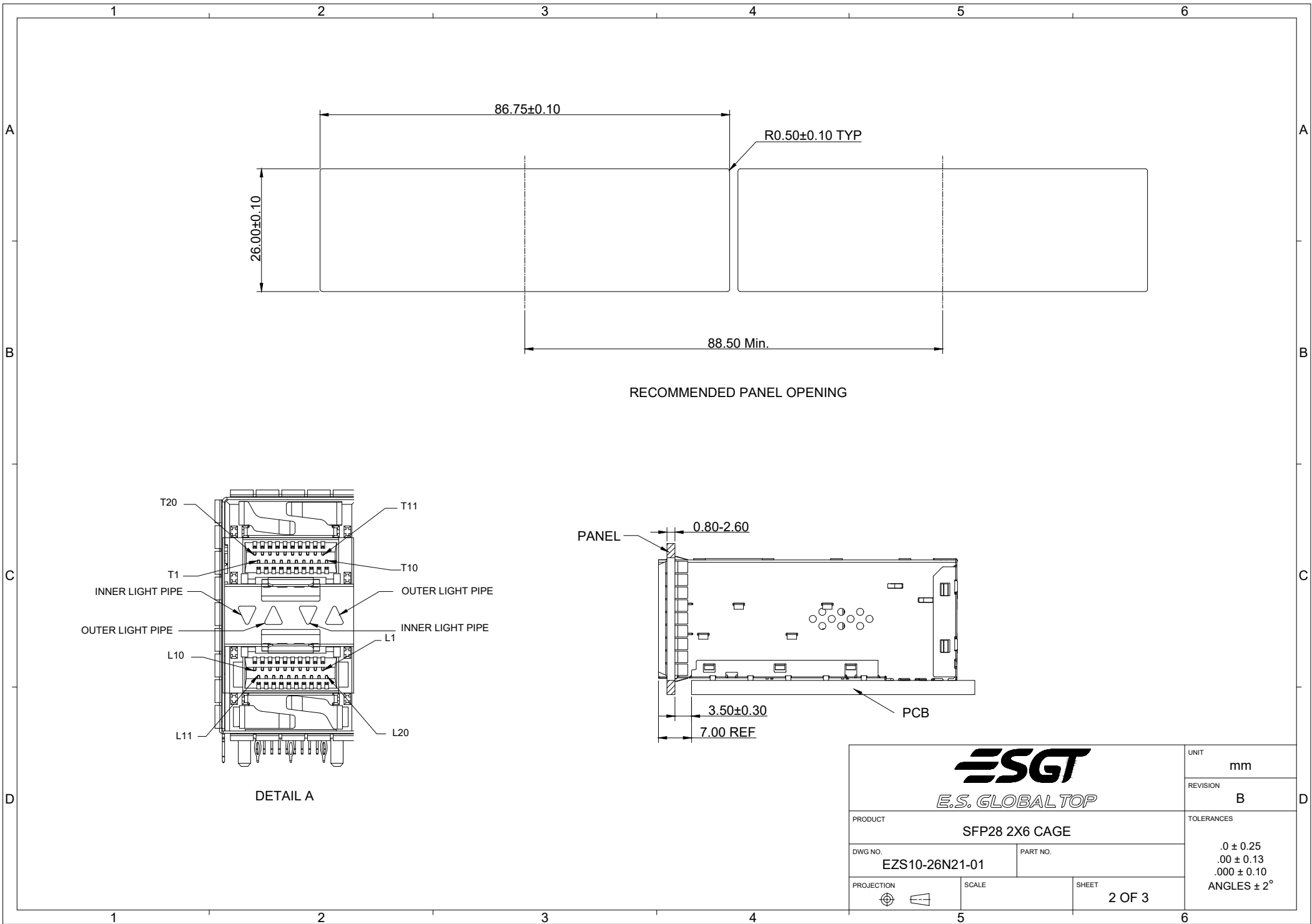


NOTES:

MECHANICAL:

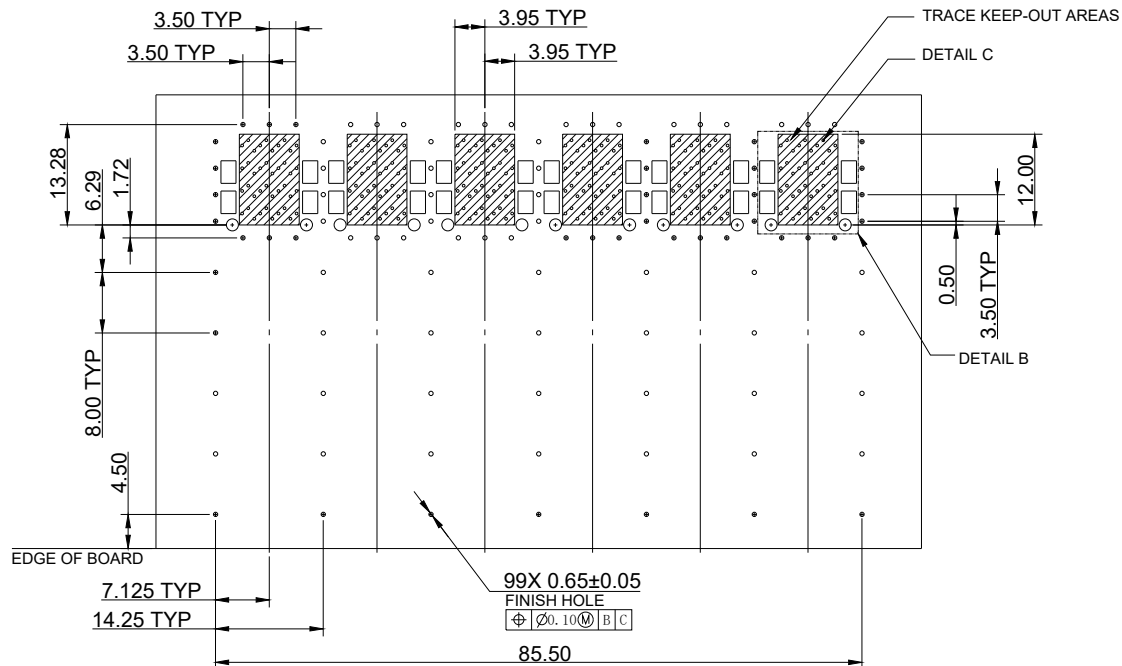
- HOUSING : LCP UL94V-0 BLACK
- INSERT : THERMOPLASTIC UL94V-0 BLACK
- CONTACT : PHOSPHOR BRONZE
- CAGE : COPPER ALLOY
- LIGHT PIPES : POLYCARBONATE UL94V-0
- LIGHT PIPE HOUSING : PBT UL94V-0 BLACK
- EMI CLIP : COPPER ALLOY
- CONTACT MATING AREA : GOLD PLATING 0.76µm Min.
OVER 1.27µm Min. NICKEL
- CONTACT PRESS-FIT PINS : 1.27µm Min. MATTE TIN PLATING
OVER 1.27µm Min. NICKEL

		UNIT	mm
		REVISION	B
PRODUCT		SFP28 2X6 CAGE	
DWG NO.	PART NO.	TOLERANCES	
EZS10-26N21-01			
PROJECTION	SCALE	SHEET	1 OF 3
		.0 ± 0.25 .00 ± 0.13 .000 ± 0.10 ANGLES ± 2°	

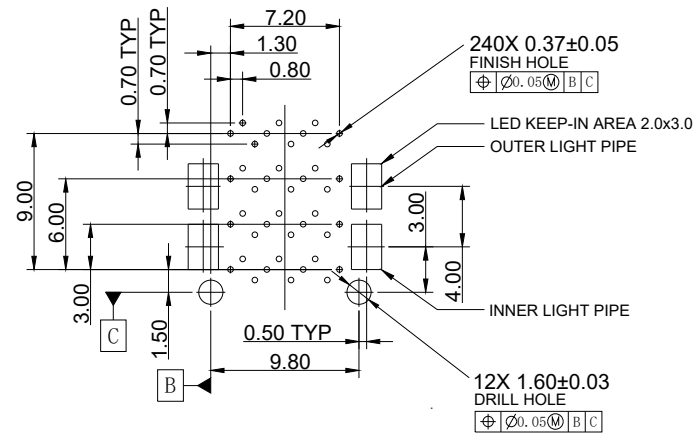


			UNIT	mm
			REVISION	B
PRODUCT			SFP28 2X6 CAGE	
DWG NO.		PART NO.		TOLERANCES
EZS10-26N21-01				
PROJECTION	SCALE	SHEET		
		2 OF 3		

.0 ± 0.25
.00 ± 0.13
.000 ± 0.10
ANGLES ± 2°

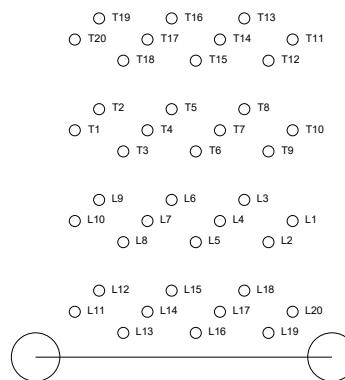


RECOMMENDED PCB LAYOUT



DETAIL B

PIN MAP



DETAIL C

		UNIT	mm
		REVISION	B
PRODUCT		SFP28 2X6 CAGE	
DWG NO.		PART NO.	
EZS10-26N21-01			
PROJECTION	SCALE	SHEET	3 OF 3
		TOLERANCES	
		.0 ± 0.25	
		.00 ± 0.13	
		.000 ± 0.10	
		ANGLES ± 2°	