
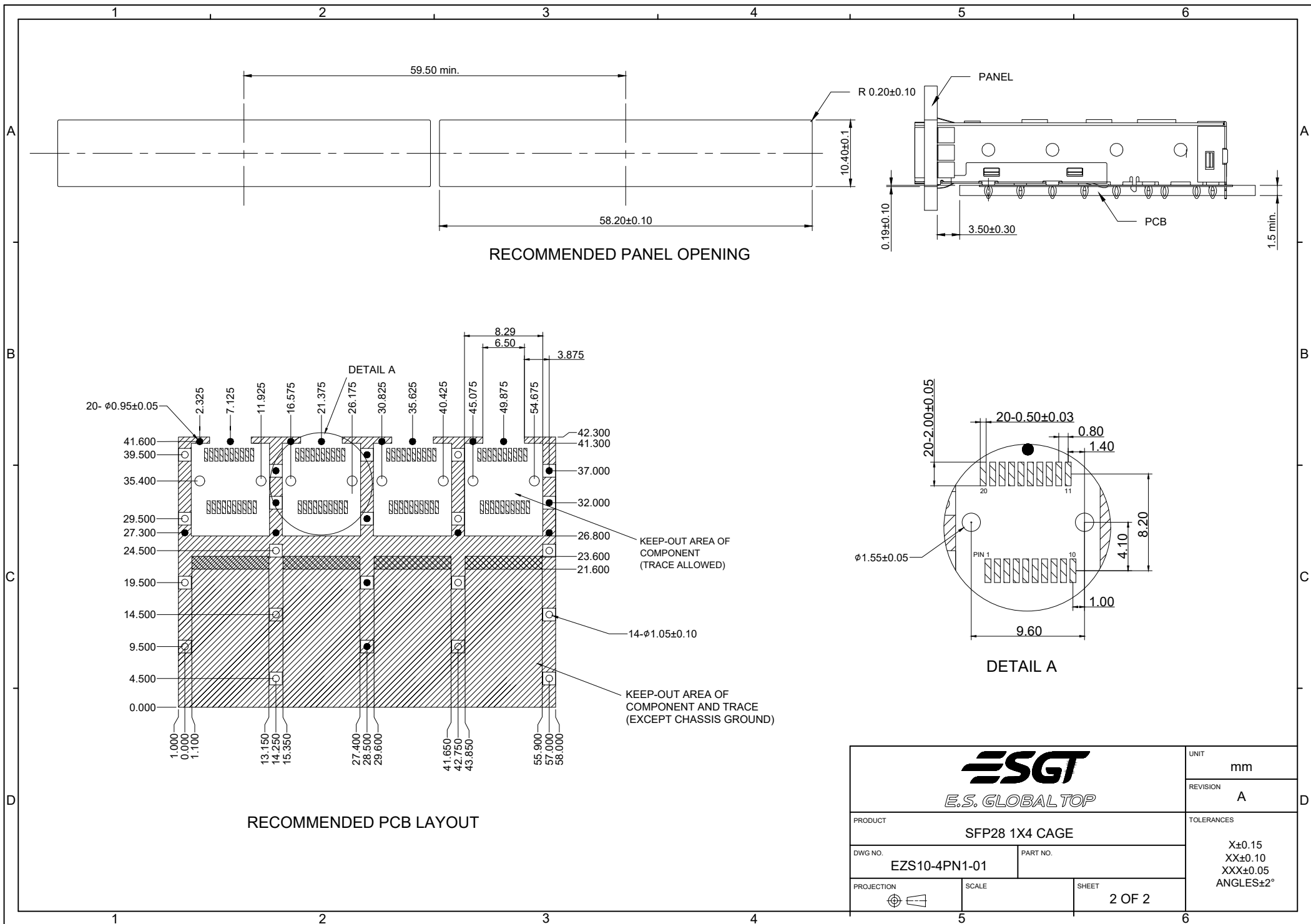

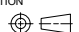


NOTE  
 MATERIAL  
 CAGE: COPPER ALLOY, Ni PLATING  
 EMI SPRINGS: COPPER ALLOY, Ni PLATING

ENVIRONMENTAL  
 STORAGE TEMPERATURE: -55°C ~ +105°C  
 OPERATION TEMPERATURE: -40°C ~ +85°C

 <b>E.S. GLOBAL TOP</b>			UNIT	mm
			REVISION	A
PRODUCT			SFP28 1X4 CAGE	
DWG NO.		EZS10-4PN1-01	PART NO.	
PROJECTION	SCALE	SHEET		1 OF 2
			TOLERANCES	
			X±0.15 XX±0.10 XXX±0.05 ANGLES±2°	



 <b>E.S. GLOBAL TOP</b>		UNIT	mm
		REVISION	A
PRODUCT		SFP28 1X4 CAGE	
DWG NO.		PART NO.	
EZS10-4PN1-01			
PROJECTION	SCALE	SHEET	
		2 OF 2	
		TOLERANCES	
		X±0.15 XX±0.10 XXX±0.05 ANGLES±2°	