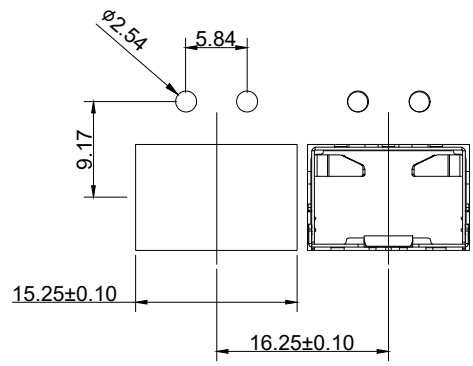
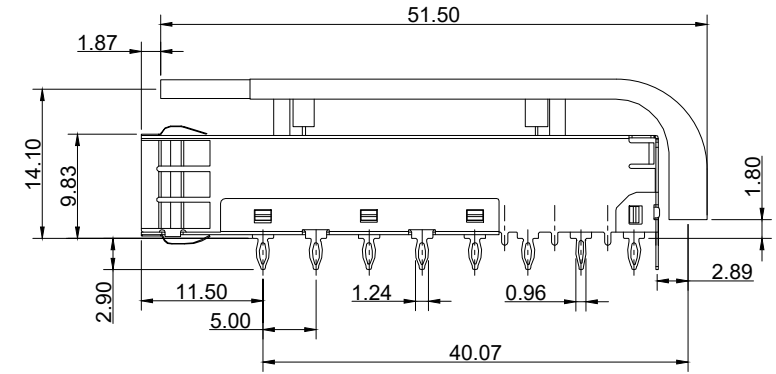
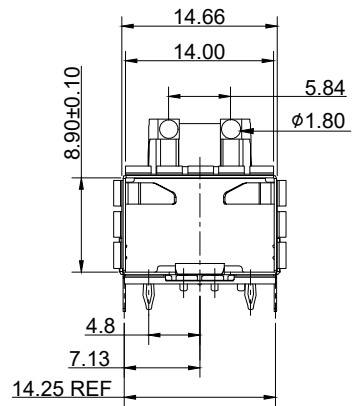
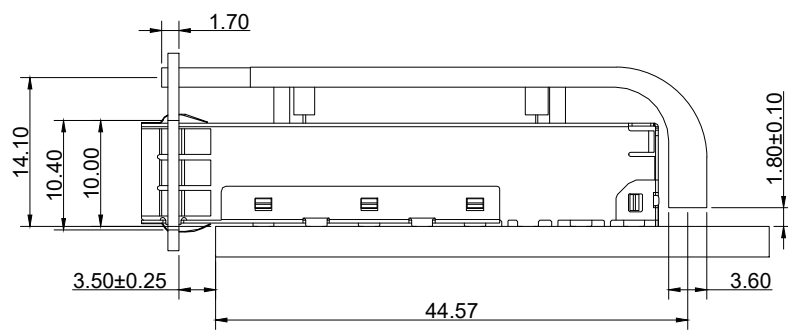


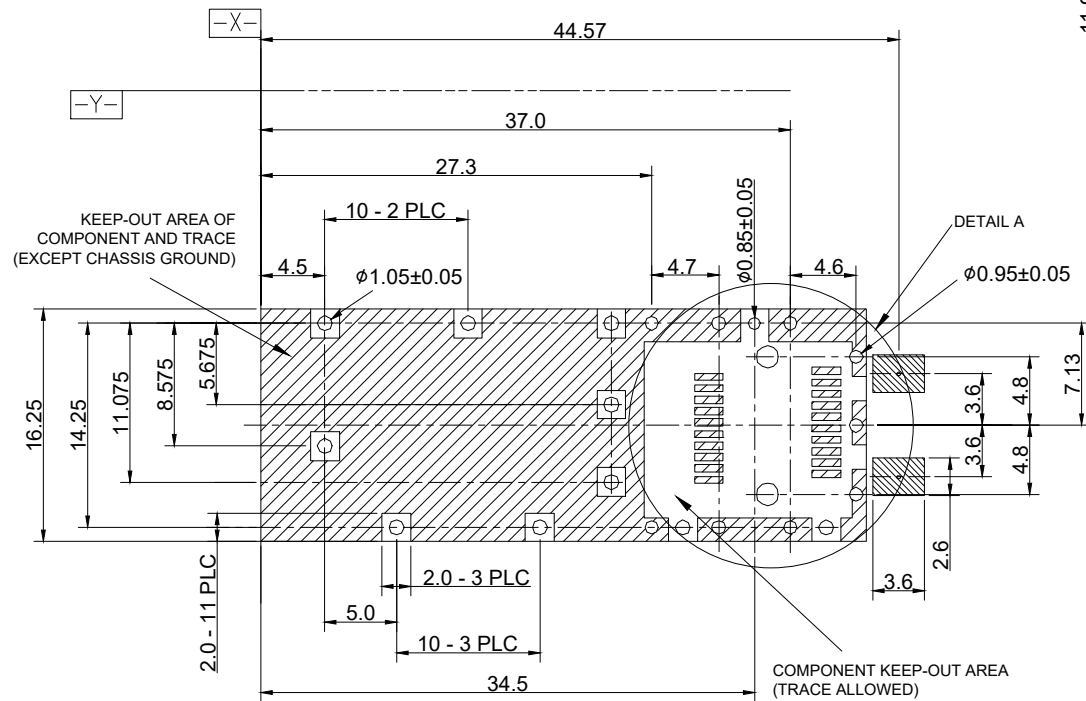
NOTES:
 CAGE : COPPER ALLOY
 EMI SPRINGS : COPPER ALLOY
 LIGHT PIPE : POLYCARBONATE
 TRANSPARENT
 OPERATION TEMPERATURE : -55°C~+105°C
 STORAGE TEMPERATURE : -55°C~+105°C



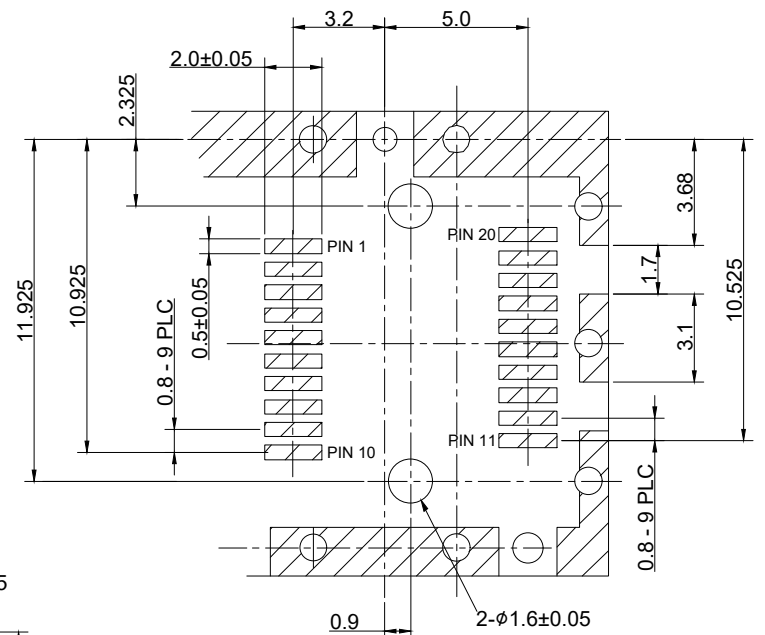
RECOMMENDED PANEL OPENING



			UNIT	mm
			REVISION	G
PRODUCT			SFP+ Cage 1x1 with Light Pipe	
DWG NO.			PART NO.	
EZSP-1N21-01				
PROJECTION	SCALE	SHEET		
		1 OF 2		
			TOLERANCES	
			.0 ± 0.25	
			.00 ± 0.20	
			.000 ± 0.15	
			ANGLES ± 0.5°	



RECOMMENDED PCB LAYOUT
(PCB Thickness 3.00mm)



DETAIL A

		UNIT	mm
		REVISION	G
PRODUCT		SFP+ Cage 1x1 with Light Pipe	
DWG NO.		PART NO.	
EZSP-1N21-01			
PROJECTION	SCALE	SHEET	2 OF 2
		TOLERANCES	
		.0 ± 0.25	
		.00 ± 0.20	
		.000 ± 0.15	
		ANGLES ± 0.5°	