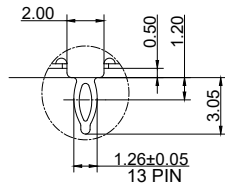
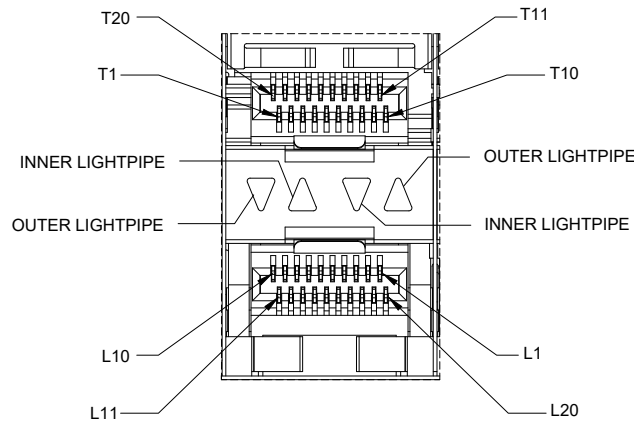


DETAIL A



DETAIL B



DETAIL A1

NOTE:

MATERIAL	
CONNECTOR CONTACT	: PHOSPHOR BRONZE
CONNECTOR HOUSING	: LCP UL94V-0 BLACK
MOULDED INSERT	: THERMOPLASTIC UL94V-0 BLACK
CAGE	: COPPER ALLOY
LIGHT PIPES	: POLYCARBONATE UL94V-0 TRANSPARENT
LIGHT PIPE HOUSING	: PBT UL94V-0 BLACK
EMI SPRING	: COPPER ALLOY
CONTACT MATING AREA	: GOLD PLATING 1.27 MICROMETERS MIN.OVER NICKEL
CONTACT PRESS-FIT PINS	: MATTE TIN PLATING 2.54 MICROMETERS MIN. OVER NIVKEL PLATING 1.27 MICROMETERS MIN.

MECHANICAL

DURABILITY	: 100 CYCLES MIN.
INSERTION / EXTRACTION FORCE	: 40N MAX. / 12.5N MAX.

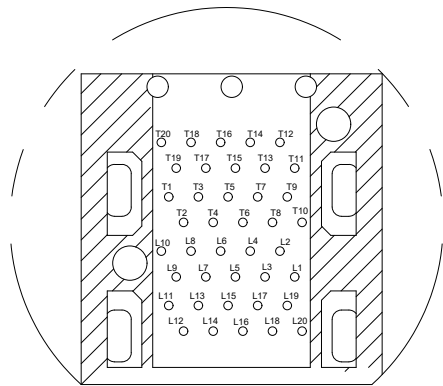
ENVIRONMENTAL

STORAGE TEMPERATURE	: -55°C ~ +105°C
OPERATION TEMPERATURE	: -40°C ~ +85°C

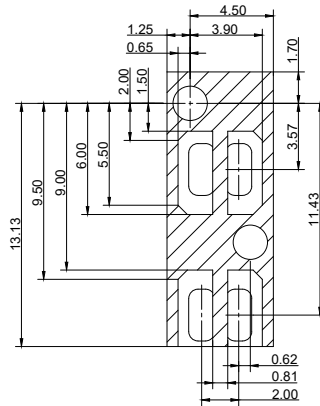
ELECTRICAL

DIELECTRIC STRENGTH	: 300V AC MAX.
INSULATION RESISTANCE	: $1 \times 10^9 \Omega$ MIN.
CURRENT RATING	: 0.5 AMPS MAX.
VOLTAGE RATING	: 30V DC / AC (RMS) MAX.
LOW LEVEL CONTACT RESISTANCE (LLCR)	: ΔR 10 m Ω MAX. FOR SHIELD AND SIGNAL CONTACTS

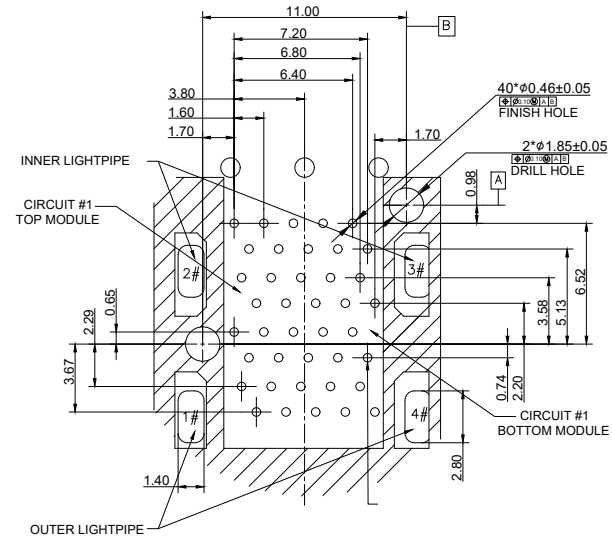
		UNIT	mm
		REVISION	G
PRODUCT		SFP+ 2x1 CAGE	
DWG NO.		PART NO.	
EZSP-21N21-01			
PROJECTION	SCALE	SHEET	1 OF 2
		TOLERANCES	
		X ± 0.25	
		XX ± 0.13	
		XXX ± 0.10	
		ANGLES ± 2°	



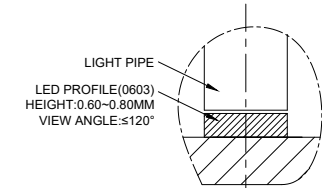
CONNECTOR PIN-OUT



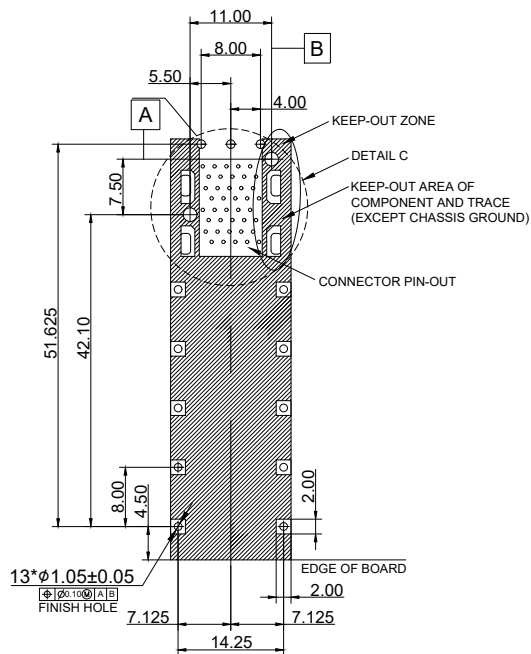
KEEP-OUT ZONE



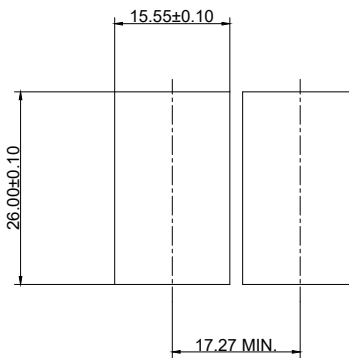
DETAIL C



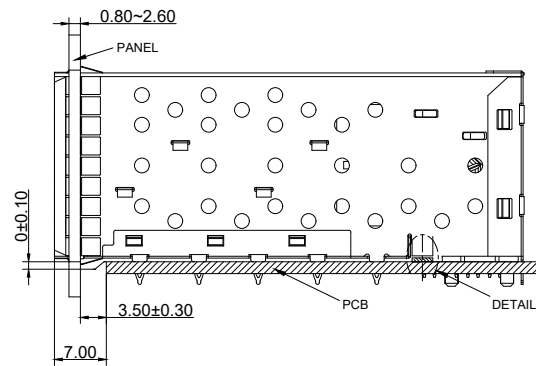
DETAIL D


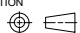


RECOMMENDED PCB LAYOUT



RECOMMENDED PANEL OPENING



 E.S. GLOBAL TOP			UNIT	mm
			REVISION	G
PRODUCT			SFP+ 2x1 CAGE	
DWG NO.		PART NO.		TOLERANCES
EZSP-21N21-01				
PROJECTION	SCALE	SHEET		
		2 OF 2		X ± 0.25 XX ± 0.13 XXX ± 0.10 ANGLES ± 2°