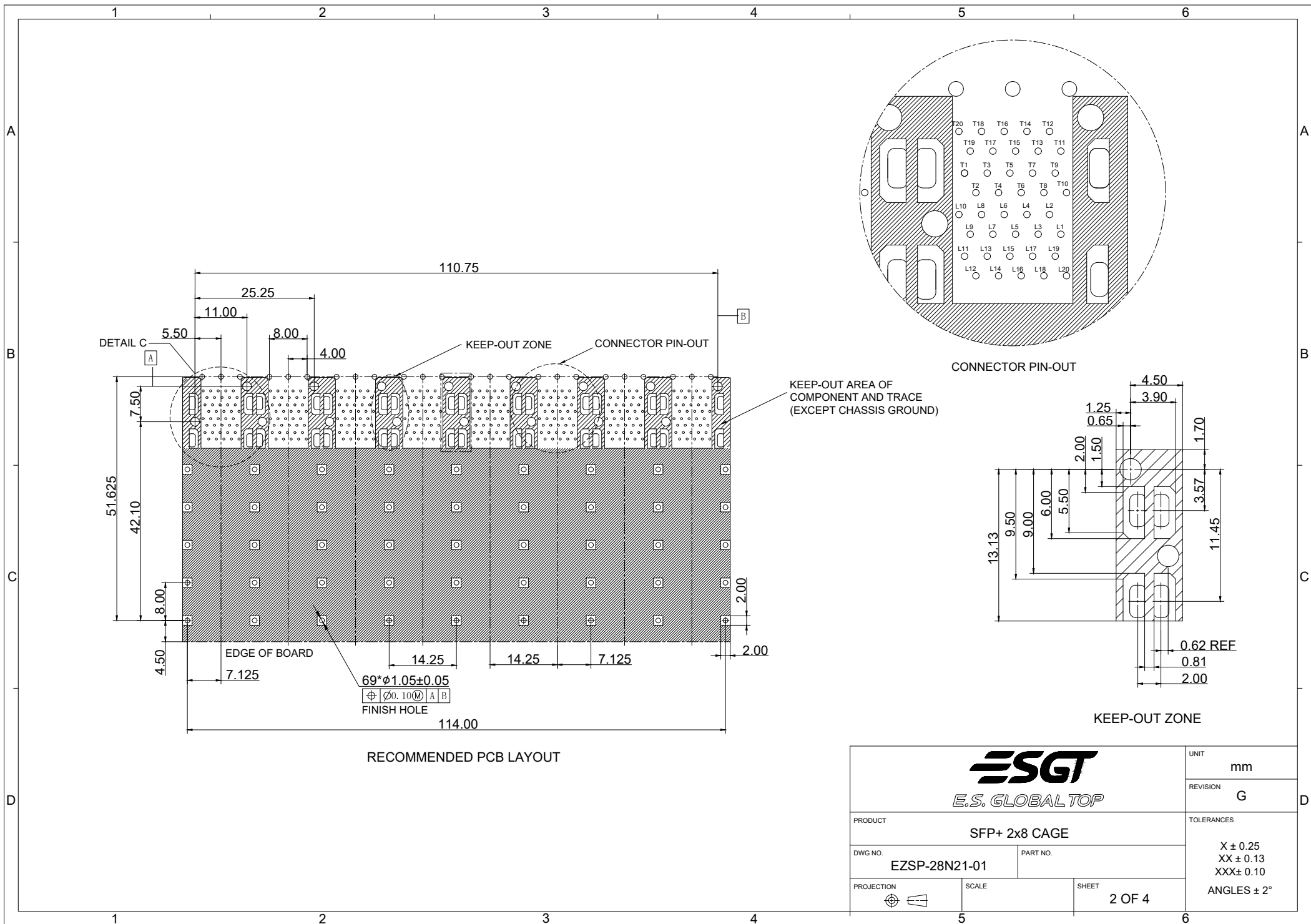
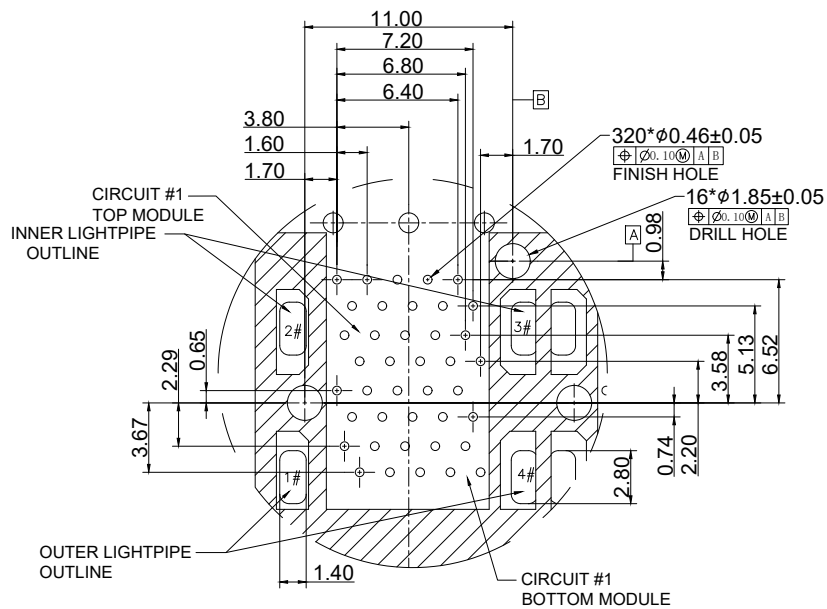


		UNIT	mm
		REVISION	G
PRODUCT		SFP+ 2x8 CAGE	
DWG NO. EZSP-28N21-01		PART NO.	
PROJECTION	SCALE	SHEET	1 OF 4
		TOLERANCES X ± 0.25 XX ± 0.13 XXX ± 0.10 ANGLES ± 2°	



			UNIT	mm
			REVISION	G
PRODUCT			SFP+ 2x8 CAGE	
TOLERANCES			X ± 0.25 XX ± 0.13 XXX ± 0.10 ANGLES ± 2°	
DWG NO.	EZSP-28N21-01		PART NO.	
PROJECTION	SCALE	SHEET		2 OF 4



DETAIL C

NOTE:

MATERIAL	: PHOSPHOR BRONZE
CONNECTOR CONTACT	: LCP UL94V-0 BLACK
CONNECTOR HOUSING	: THERMOPLASTIC UL94V-0 BLACK
MOULDED INSERT	: COPPER ALLOY
CAGE	: POLYCARBONATE UL94V-0 TRANSPARENT
LIGHT PIPES	: PBT UL94V-0 BLACK
LIGHT PIPE HOUSING	: COPPER ALLOY
EMI SPRING	: GOLD PLATING 1.27 MICROMETERS MIN.OVER NICKEL
CONTACT MATING AREA	: MATTE TIN PLATING 2.54 MICROMETERS MIN. OVER NIVKEL PLATING 1.27 MICROMETERS MIN.
CONTACT PRESS-FIT PINS	: MATTE TIN PLATING 2.54 MICROMETERS MIN. OVER NIVKEL PLATING 1.27 MICROMETERS MIN.

MECHANICAL REQUIREMENT


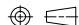
DURABILITY	: 100 CYCLES MIN.
INSERTION / EXTRACTION FORCE	: 40N MAX. / 12.5N MAX.

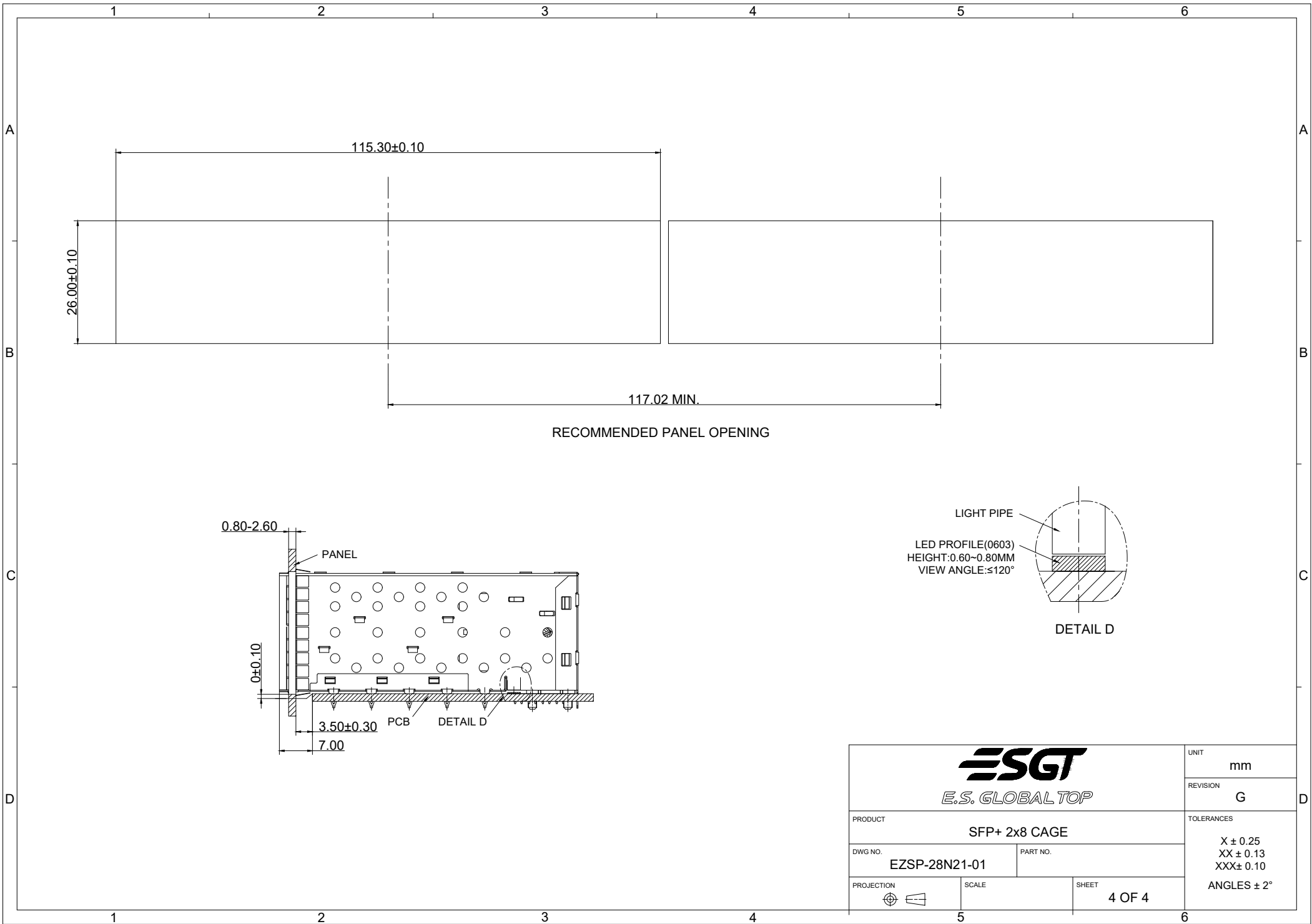
ENVIRONMENTAL

STORAGE TEMPERATURE	: -55°C ~ +105°C
OPERATION TEMPERATURE	: -40°C ~ +85°C

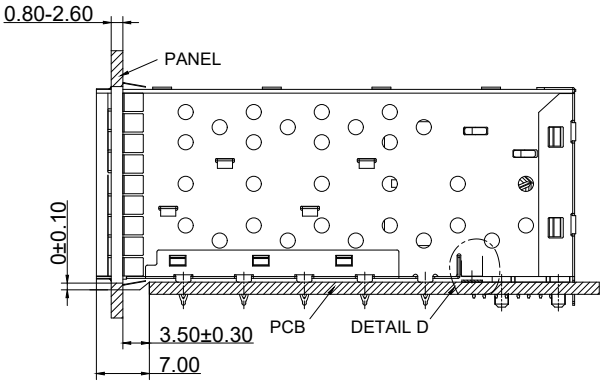
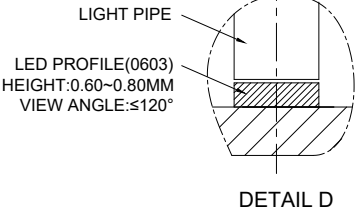
ELECTRICAL


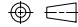
DIELECTRIC STRENGTH	: 300V AC MAX.
INSULATION RESISTANCE	: 1x10 ⁹ Ω MIN.
CURRENT RATING	: 0.5 AMPS MAX.
VOLTAGE RATING	: 30V DC / AC (RMS) MAX.
LOW LEVEL CONTACT RESISTANCE (LLCR)	: ΔR 10 mΩ MAX. FOR SHIELD AND SIGNAL CONTACTS

 E.S. GLOBAL TOP		UNIT	mm
		REVISION	G
PRODUCT		SFP+ 2x8 CAGE	
DWG NO.		PART NO.	
EZSP-28N21-01			
PROJECTION	SCALE	SHEET	3 OF 4
			
		TOLERANCES	
		X ± 0.25	
		XX ± 0.13	
		XXX ± 0.10	
		ANGLES ± 2°	



RECOMMENDED PANEL OPENING



 E.S. GLOBAL TOP		UNIT	mm
		REVISION	G
PRODUCT		SFP+ 2x8 CAGE	
DWG NO.		PART NO.	
EZSP-28N21-01			
PROJECTION	SCALE	SHEET	4 OF 4
			
		TOLERANCES	
		X ± 0.25	
		XX ± 0.13	
		XXX ± 0.10	
		ANGLES ± 2°	