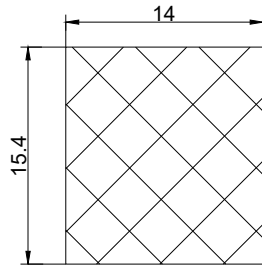
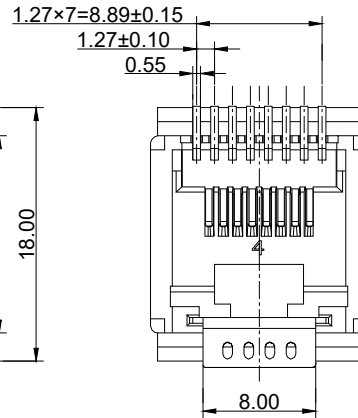
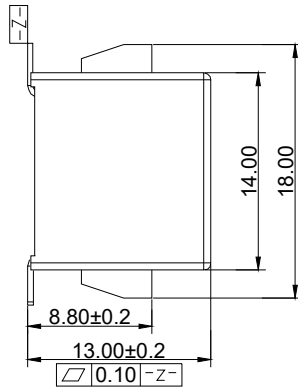
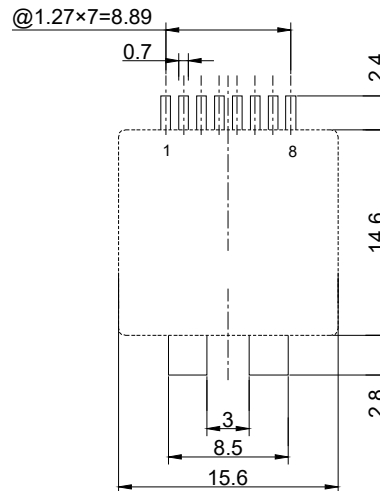
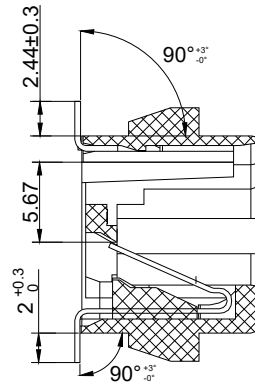


MYLAR



MYLAR T=0.18



RECOMMENDED PCB LAYOUT

NOTES:

MECHANICAL



- HOUSING & INSERT : LCP BLACK UL94V-0
- CONTACT : PHOSPHOR BRONZE
- CONTACT PLATING : CONTACT AREA SELECTIVE
GOLD PLATING SOLDER AREA
TIN OVER NICKEL
- MATING/UNMATING FORCE : 30N Max.
- RETENTION STRENGTH : 50N FOR 60s±5s.
- DURABILITY : 750 CYCLES MIN.

ELECTRICAL

- VOLTAGE RATING : 150V AC RMS.
- CURRENT RATING : 1.5 AMPS @25
- CONTACT RESISTANCE : 20mΩ Max.
- INSULATION RESISTANCE : 1000MΩ Min. @500V DC
- DIELECTRIC STRENGTH : 1000V DC OR PEAK @0.5mA
50Hz OR 60Hz ONE MINUTE

ENVIRONMENTAL

- STORAGE TEMPERATURE : -40°C~+85°C
- OPERATION TEMPERATURE : -40°C~+85°C

 E.S. GLOBAL TOP		UNIT	mm
		REVISION	01
PRODUCT		RJ45 1X1 TOP ENTRY JACK SMT	
DWG NO.	EZC745-18N11-02	PART NO.	
PROJECTION		SCALE	SHEET
		1 OF 1	

UNIT
mm

REVISION
01

PRODUCT
RJ45 1X1 TOP ENTRY JACK SMT

DWG NO.
EZC745-18N11-02

PART NO.

PROJECTION


SCALE

SHEET

1 OF 1

TOLERANCES
00~15 ± 0.15
15~30 ± 0.20
30~ ± 0.25
ANGLES ± 1°