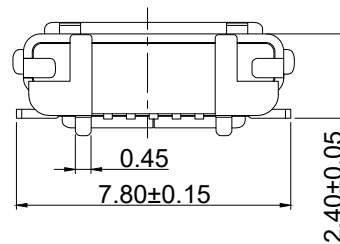
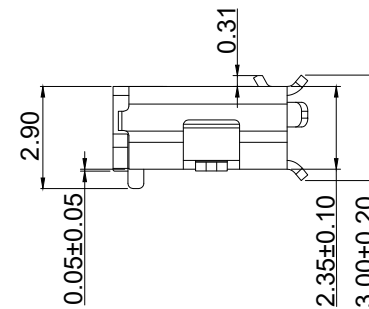
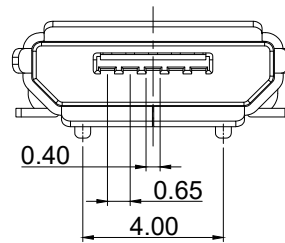




RECOMMENDED PCB LAYOUT



NOTES:
MECHANICAL:
 HOUSING : LCP BLACK UL 94V-0
 CONTACT : C5191 Au/Sn PLATING
 SHELL : C2680 NICKEL PLATED

ELECTRICAL:
 VOLTAGE RATING : 30 VDC
 CURRENT RATING : 1AMP
 CONTACT RESISTANCE : 50mΩ MAX.
 INSULATION RESISTANCE : 100 MΩ MIN.
 DIELECTRIC STRENGTH : 300V AC
 MATING / UNMATING FORCE : 3.0KGF MAX. / 0.7KGF MIN.
 RETENTION STRENGTH : 0.5KGF MIN.

 E.S. GLOBAL TOP		UNIT	mm
		REVISION	A-1
PRODUCT		MICRO USB TYPE B SMT	
DWG NO.	EZUMR-1SS1-01	PART NO.	
PROJECTION		SCALE	SHEET
		1 OF 1	
		TOLERANCES	
		X.±0.38	X.°4.0
		.X±0.30	.X°2.0
		.XX±0.25	
		.XXX±0.10	